

WHERE QUALITY AND
INNOVATION ARE STANDARD



29TH EDITION

JEWELRY BOX OPTIONS

NOTE: ONE EARRING DOOR WILL BE STANDARD, PLEASE SELECT WHICH STYLE YOU PREFER.

Second earring door available on leaner jewelry or -110 Boxes only. See price list. Specify Screen Earring Door or Slat Earring Door.



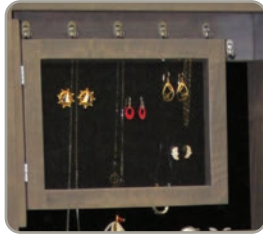
CHEVAL SCREEN EARRING DOOR
14" W x ¾" D x 13" H



SCREEN EARRING DOOR BACK



CHEVAL SLAT EARRING DOOR
14" W x ¾" D x 13" H



LEANER SCREEN EARRING DOOR
13" W x ¾" D x 9½" H



SLAT EARRING DOOR BACK



LEANER SLAT EARRING DOOR
13" W x ¾" D x 9½" H



Door Sensor



LED LIGHTING

Door Sensor Turns Lights On and Off As Door Opens and Closes

DRAWER LOCK

Our strongest lock!
This lock mounts into the side of the box.
The throw goes into the mirror frame.



INSIDE VIEW



BLACK



BRUSHED NICKEL



ANTIQUE BRASS

CHILD-PROOF MAGNETIC LOCK OPTION

Magnetic locks are concealed locks that use a magnetic key to open the lock. Locks can be disengaged by moving red clip forward.

Standard on all gun cabinets.
No keyhole on the outside



SECRET COMPARTMENT

Revealed



Hidden



Simply lift divider tray to reveal hidden compartment! Secret compartment is at the bottom on cheval mirrors and in the center on leaner mirrors.

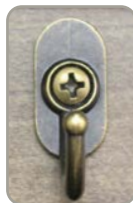
HOOKS



Black



Brushed Nickel



Antique Brass

CRUSHED VELVET



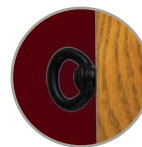
Black



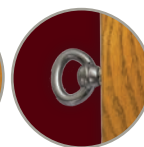
Burgundy

COLORS IN CATALOG MAY NOT MATCH ACTUAL COLOR

MIRROR SWIVELS



Black



Brushed Nickel



Antique Brass

THIS PAGE FEATURES THE DIFFERENT STYLES OF JEWELRY BOXES AVAILABLE



-105 HAS ONE 18" NECKLACE OPENING AND A BOX DIMENSION OF 4" D x 20" W x 53".



-110 HAS TWO 12" NECKLACE OPENINGS AND A BOX DIMENSION OF 4" D x 20" W x 53".

Shown with secret bottom compartment, which has a 2 1/8" front with a 3 divider.
Shown with optional earring door



-110-WM JEWELRY BOX

- Shown with a 4"D X 20"W X 53" box
 - Optional earring door.
 - Available in 105 and 110 box
- NOTE: Add WM behind item number for all wall mounted jewelry boxes.

DO NOT USE THESE NUMBERS TO ORDER- THEY ARE STYLE NUMBERS ONLY



-101 HAS TWO 12" NECKLACE OPENINGS AND A BOX DIMENSION OF 4" D x 20" W x 63 1/2" H.

- 1st shelf 3 ring slots
- 2nd shelf 3 dividers
- 3rd shelf 4 dividers
- Bottom 1 divider
- Each necklace board has 11 hooks
- All jewelry chevals and leaners have the same layout in the shelves



All jewelry boxes are now standard with eased edges to eliminate joint separation.



-102 HAS TWO 12" NECKLACE OPENINGS AND A BOX DIMENSION OF 10 1/4" D x 20" W x 63 1/2" H.

NOTE: All cheval, leaner, and jewelry mirrors in this catalog are available as wall mirrors. Add -WM behind item number when ordering. All mirrors slide right unless otherwise ordered. Hinged version available, see price list.

NOTE: PLEASE BE SURE TO SPECIFY VELVET, HOOK AND SWIVEL COLOR WHEN ORDERING. SEE PAGE 1 FOR OPTIONS.

JEWELRY CHEVALS



1002-105 MILANO JEWELRY CHEVAL
26"W x 18"D x 69"H



1003-105 RIVER RUN JEWELRY CHEVAL
26"W x 18"D x 70½"H



1004-105 EMINENCE JEWELRY CHEVAL
26" W x 18" D x 74" H
Available in Cherry only.

matches



EARRING DOOR IS NOW STANDARD. SPECIFY SLAT OR SCREEN EARRING DOOR WHEN ORDERING.



1005-110 MADISON JEWELRY CHEVAL
26"W x 18"D x 70½"H
Flat mirror.



1006-105 ERD BUNKER HILL JEWELRY CHEVAL
26"W x 18"D x 71½"H



1008-105 RENO JEWELRY CHEVAL
26" W x 18" D x 69" H



1009-110 ERD OPEN TOP MISSION JEWELRY CHEVAL
26" W x 18" D x 72½" H



1010-105 SHAKER JEWELRY CHEVAL
26" W x 18" D x 69" H
Shown in wormy maple.



1011-105 TRADITIONAL SHAKER JEWELRY CHEVAL
26" W x 18" D x 69" H

EARRING DOOR IS NOW STANDARD. SPECIFY SLAT OR SCREEN EARRING DOOR WHEN ORDERING.



Distressing Detail



1012-110 ERD ANTIQUE SHAKER JEWELRY CHEVAL (SHOWN IN RUSTIC WALNUT)
26" W x 18" D x 71" H



1020-105 SONOMA JEWELRY CHEVAL
26" W x 17" D x 69½" H
HEAVY DISTRESSING STANDARD ON THIS STYLE



1021-105 LEXINGTON OVAL JEWELRY CHEVAL
26" W x 17" D x 69½" H
Available in 48" box only

NOTE: PLEASE BE SURE TO SPECIFY VELVET, HOOK AND SWIVEL COLOR WHEN ORDERING. SEE PAGE 1 FOR OPTIONS.

JEWELRY CHEVALS



1022-105 HARTFORD JEWELRY CHEVAL 26" W x 18" D x 70" H

Will not have boxes at the bottom when using secret compartment option. (See picture above)



1023-105 COLONIAL MISSION JEWELRY CHEVAL

26" W x 18" D x 68" H. Flat Mirror. (Shown with optional LED Lighting.)



1025-105 BROOKLYN JEWELRY CHEVAL

26" W x 18" D x 72" H

matches



EARRING DOOR IS NOW STANDARD. SPECIFY SLAT OR SCREEN EARRING DOOR WHEN ORDERING.

Standard with Walnut Trim



1026-105 MAPLE CREEK JEWELRY CHEVAL

26" W x 18" D x 69½" H
Matches Veraluxe's Maple Creek Collection

matches



1027-105 BROOKLYN SHAKER JEWELRY CHEVAL

26" W x 18" D x 69" H

matches



1028-105 ERD ARLINGTON JEWELRY BOX CHEVAL

26" W x 18" D x 71¾" H

matches

FOR MORE STYLE SELECTIONS SEE CHEVAL PAGES 21 & 22



1029-105 ERD TRENTON SHAKER JEWELRY CHEVAL
26" W x 18" D x 69" H



1030-105 ERD BARN DOOR TRACK JEWELRY CHEVAL
26" W x 18" D x 72" H
Shown with Rough Sawn option on door.



1031-110 ERD BARN WOOD TOP JEWELRY CHEVAL
26" W x 18" D x 69½" H
Shown Wormy Maple with Bel Aire, with barnwood top in Rich Tobacco.

EARRING DOOR IS NOW STANDARD. SPECIFY SLAT OR SCREEN EARRING DOOR WHEN ORDERING.

MORE STYLE OPTIONS.



1032-105 ERD WILLIAMSPORT JEWELRY CHEVAL
26" W x 18" D x 68" H matches



1011-105 TRADITIONAL SHAKER JEWELRY CHEVAL
26" W x 18" D x 69" H
Shown in Reclaimed Barnwood, with optional LED lights.



1011-105 TRADITIONAL SHAKER JEWELRY CHEVAL
26" W x 18" D x 69" H
Shown in Wormy Maple, with optional second hookboard.

NOTE: PLEASE BE SURE TO SPECIFY VELVET, HOOK AND SWIVEL COLOR WHEN ORDERING. SEE PAGE 1 FOR OPTIONS.

SLIDING MIRROR JEWELRY BOX LEANERS



**1034-101 TRADITIONAL SHAKER
LEANER JEWELRY**

26½" W x 20" D x 72¾" H
44" wide when opened.



**1035-101 SHAKER
LEANER JEWELRY**

26½" W x 20" D x 72" H



**1036-101 ERD OPEN TOP
MISSION LEANER JEWELRY**

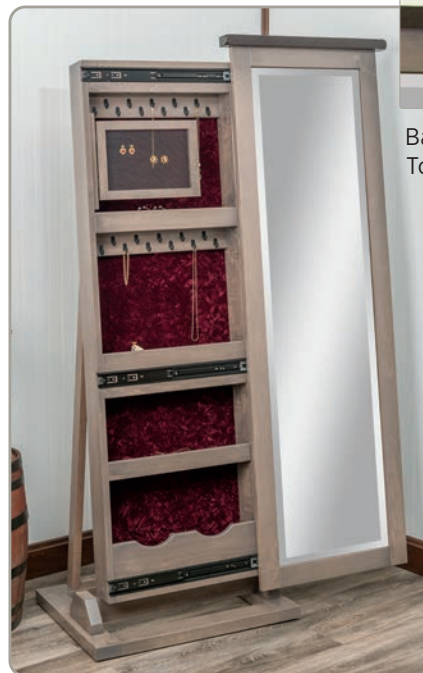
26½" W x 20" D x 75" H

**1 EARRING DOOR IS NOW STANDARD. SECOND EARRING DOOR AVAILABLE ON LEANER JEWELRY ONLY.
SEE PRICE LIST. SPECIFY SCREEN EARRING DOOR OR SLAT EARRING DOOR.**



**1037-101 ANTIQUE SHAKER
LEANER JEWELRY**

26½" W x 20" D x 73" H



**1044-101 ERD BARN WOOD TOP
LEANER JEWELRY**

26" W x 20" D x 73¾" H

Barnwood
Top Detail



**1045-101 ERD ARLINGTON matches
LEANER JEWELRY**

26½" W x 20" D x 75½" H

ALL LEANERS ON PAGE 23 & 24 ARE AVAILABLE WITH THIS STYLE BOX. JUST ADD ITEM# AND -101



1047 -101 MILANO LEANER JEWELRY
26½" W x 20" D x 71" H



1047 -101 MILANO LEANER JEWELRY
Shown closed.



1050-101 HARTFORD LEANER JEWELRY
26½" W x 20" D x 73" H
Slides to the right unless ordered otherwise. Slide left option shown.

1 EARRING DOOR IS NOW STANDARD. SECOND EARRING DOOR AVAILABLE ON LEANER JEWELRY ONLY. SEE PRICE LIST. SPECIFY SCREEN EARRING DOOR OR SLAT EARRING DOOR.



1051-101 COLONIAL MISSION LEANER JEWELRY
26½" W x 20" D x 72" H



1053-101 BROOKLYN LEANER JEWELRY
26½" W x 20" D x 75½" H



1056-101 ERD TRENTON SHAKER LEANER JEWELRY
26½" W x 20" D x 71½" H

ALL LEANERS ON PAGE 23 & 24 ARE AVAILABLE WITH THIS STYLE BOX. JUST ADD ITEM# AND -101

NOTE: PLEASE BE SURE TO SPECIFY VELVET, HOOK AND SWIVEL COLOR WHEN ORDERING. SEE PAGE 1 FOR OPTIONS.

LEANER JEWELRIES



**1057-101 ERD WILLIAMSPORT
LEANER JEWELRY**
26½" W x 20" D x 72" H



**1058-101 ERD BARN DOOR TRACK
LEANER JEWELRY**
26½" W x 20" D x 76½" H



**1061 RIVER RUN LEANER
JEWELRY**
26½" W x 20" D x 73¾" H

**1 EARRING DOOR IS NOW STANDARD. SECOND EARRING DOOR AVAILABLE ON LEANER JEWELRY ONLY.
SEE PRICE LIST. SPECIFY SCREEN EARRING DOOR OR SLAT EARRING DOOR.**

CUSTOM OPTIONS ARE AVAILABLE. CALL FOR PRICING.



**1035-101 SHAKER LEANER
JEWELRY**
26½" W x 20" D x 72" H
Shown with hinged door. Closed.



1035-101 SHAKER LEANER JEWELRY
26½" W x 20" D x 72" H
Shown with hinged door. Open with 3
Earring Doors on back of door.



SCREEN EARRING DOOR
13" W x ¾" D x 9½" H
Post earrings work best in this
Earring Door.



SLAT EARRING DOOR
13" W x ¾" D x 9½" H



1044-102 BARNWOOD TOP MEGA JEWELRY

26½" W x 24" D x 73" H

Outside box dimension: 20" W x 63 ½" H x 10" D



1044-102 BARNWOOD TOP MEGA JEWELRY

26½" W x 24" D x 73" H

44" wide when opened.

Shown with optional LED lighting.

1 EARRING DOOR IS NOW STANDARD. SECOND EARRING DOOR AVAILABLE ON LEANER JEWELRY ONLY. SEE PRICE LIST. SPECIFY SCREEN EARRING DOOR OR SLAT EARRING DOOR.



SCREEN EARRING DOOR

13" W x ¾" D x 9½" H

Post earrings work best in this Earring Door.



SECRET COMPARTMENT HIDDEN



SLAT EARRING DOOR

13" W x ¾" D x 9½" H



SECRET COMPARTMENT REVEALED

ROTATING JEWELRY LEANER WITH SHELVES.



ALL ROTATING JEWELRY LEANERS ARE NOW AVAILABLE WITH MAGNETIC LED LIGHTS.

SEE PRICE LIST FOR PRICING



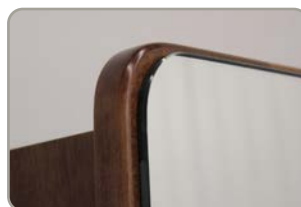
Magnetic strip lights w/motion sensor. Can be removed to charge via USB.



Shown with metal mounting tabs



5 brightness settings

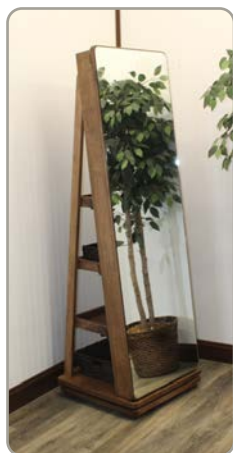


Mirror detail.

ROTATES 360°

1047-103 MILANO ROTATING LEANER JEWELRY

22" W x 22" D x 72" H. 3 leaning shelves on backside. Includes 1 earring door, 2 baskets & 1 scarf rack on back. Shown with optional 2nd earring door.



Closed view.



Back view.



Shown without LED lights.



Side view.

ALL LEANERS ON PAGE 23 & 24 ARE AVAILABLE WITH THIS STYLE BOX. JUST ADD ITEM# AND -103

INTRODUCING THE INDUSTRY'S FIRST DRESSER MIRROR WITH SLIDING JEWELRY WINGS

Front view, wings concealed.



JEWELRY TRAYS ARE 2" DEEP!

WING FEATURES:

- 18 necklace hooks
- 2 rings slots, 1 wide, one narrow
- 5 shelves with dividers.

2425 DRESSER MIRROR WITH SLIDING JEWELRY WINGS

44" W x 44" H x 5½" D

Base is 8" deep. 73½" wide when open.

Dresser Not Included.

CRUSHED VELVET



Black



Burgundy

HOOKS



Black



Brushed
Nickel



Antique
Brass

Colors in catalog may
not match actual color.

This one of a kind Dresser Mirror lets you hide your jewelry behind your Dresser Mirror. This design allows you to access your jewelry by simply pulling Full Extension Jewelry Wings out of each side. These wings are concealed with what appears to be an onlay, but a concealed finger pull slot allows you to open wings without the dead give away of a pull or knob. Wings have Full Extension drawer slides which provides smooth and durable sliding action. This box adds 5¾" including the back behind your Mirror. Wings are 3" deep with 2" space for jewelry.

We can also design boxes that will fit your existing dresser mirrors.
Wing sizes are available in 14", 16" and 18" to fit most any size.



2482-101 CAMBRIDGE JEWELRY CABINET

24½" W x 5" D x 36½" H. bevel mirror

Depth behind shelf is 3"

NOTE: MOST WALL MIRROR FRAMES ARE AVAILABLE WITH THESE
WALL MOUNT BOXES. SEE WALL MIRROR PAGES AND PRICE LIST.



Look for
this starburst
in the Wall
mirrors
for more
available styles



2482-800 CAMBRIDGE MEDICINE CABINET

25½" W x 6" D x 37½" H with two adjustable shelves
Inside box depth 4¾"

Child proof magnetic lock optional.
Makes a great vanity mirror!



**THIS TOWER
COMBINES A FULL
LENGTH LEANER
JEWELRY FRONT
WITH RIFLE CABINET
IN THE BACK.**

1 Earring door standard.

**Picture shown with
optional second
Earring Door.**

**HOLDS 6
RIFLES & 2
HANDGUNS!**



FRONT VIEW. OPEN

1035-515 SHAKER JEWELRY/RIFLE TOWER

21" W x 19" D x 72" H

Box Dim. 20"W x 18"D x 66"H

Shown in Barn Floor Brown Maple.

HIS & HERS.

Ear Ring Door hinges for easy access.

This tower features a 16" lazy susan in the base which allows it to rotate 360°

ALL ROTATING TOWERS ARE NOW AVAILABLE WITH MAGNETIC LED LIGHTS.



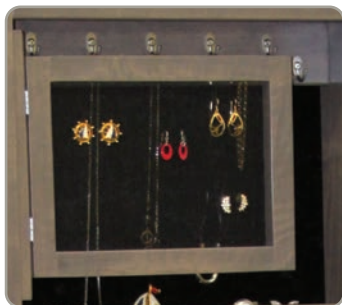
BACK VIEW. CLOSED

**ALL RIFLE BACK DOORS WILL
BE REVERSE RAISED PANELS.**



SLAT EARRING DOOR

13" W x 3/4" D x 9 1/2" H



SCREEN EARRING DOOR

13" W x 3/4" D x 9 1/2" H

Post earrings work best in this
Earring Door.

ALL LEANERS ON PAGE 23 & 24 ARE AVAILABLE WITH THIS STYLE BOX. JUST ADD ITEM# AND -515



**THIS TOWER COMBINES
A FULL LENGTH LEANER
JEWELRY FRONT
WITH SHELVES AND
BASKETS IN THE BACK.**

This tower features a
16" lazy susan in the
base which allows it to
rotate 360°



Shown with optional LED lights.

FRONT VIEW.

**1044-525 BARN WOOD JEWELRY/
BASKET TOWER**

23½" W x 20" D x 71¾" H

Shown in Br. Maple with Driftwood

Shown with standard earring door.

1 EARRING DOOR IS NOW STANDARD. SPECIFY SLAT OR SCREEN EARRING DOOR WHEN ORDERING.



Back View

**ALL ROTATING TOWERS ARE NOW AVAILABLE WITH MAGNETIC LED LIGHTS.
SEE PRICE LIST FOR PRICING**



Magnetic strip lights w/motion sensor.
Can be removed to charge via USB.



Shown with metal mounting tabs



5 brightness settings

Can be switched to auto (motion) or on

ALL LEANERS ON PAGE 23 & 24 ARE AVAILABLE WITH THIS STYLE BOX. JUST ADD ITEM# AND -525

NOTE: PLEASE BE SURE TO SPECIFY VELVET, HOOK AND SWIVEL COLOR WHEN ORDERING. SEE PAGE 1 FOR OPTIONS.



FRONT VIEW.

**1044-550 BARN WOOD JEWELRY/
JEWELRY ARMOIRE**

23½" W x 21" D x 71¾" H

**8 VELVET-LINED DRAWERS FOR ADDITIONAL
JEWELRY STORAGE.**



TOP BACK SECTION

**FEATURES: 25
JEWELRY HOOKS
AND VELVET LINED
BOTTOM.**

Shown Wormy Maple
with Bel Air.
With barnwood top in
Rich Tobacco.



BACK VIEW.

ALL ARMOIRE SIDES WILL HAVE 1035 MIRROR FRAME

This tower features a 16" lazy susan in the base
which allows it to rotate 360°

1 EARRING DOOR IS NOW STANDARD. SPECIFY SLAT OR SCREEN EARRING DOOR WHEN ORDERING.

ALL LEANERS ON PAGE 23 & 24 ARE AVAILABLE WITH THIS TOWER. JUST ADD ITEM# AND -550



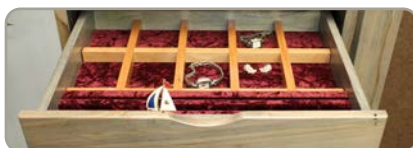
SCREEN EARRING DOOR

13" W x ¾" D x 9½" H



SLAT EARRING DOOR

13" W x ¾" D x 9½" H



1ST DRAWER



5TH DRAWER



2ND DRAWER



6TH DRAWER



3RD DRAWER



7TH DRAWER



4TH DRAWER



8TH DRAWER

A WOMAN'S NEW BEST FRIEND!



1035-575 SHAKER JEWELRY/SHOE TOWER

21" W x 19" D x 72" H

Box Dim. 20"W x 18"D x 66"H

Shown in Br. Maple with Driftwood.

1 EARRING DOOR IS NOW STANDARD.

SPECIFY SLAT OR SCREEN EARRING DOOR WHEN ORDERING.



ALL ROTATING TOWERS ARE NOW AVAILABLE WITH MAGNETIC LED LIGHTS.

DETAILS ON PAGE 16

SEE PRICE LIST FOR PRICING



5 brightness settings

Can be switched to auto (motion) or on



Magnetic strip lights w/motion sensor.
Can be removed to charge via USB.

THIS TOWER COMBINES A FULL LENGTH LEANER JEWELRY FRONT WITH BAGS IN THE BACK FOR 30 PAIRS OF SHOE STORAGE !!

HOLDS 30 PAIRS OF SHOES AND JEWELRY!

THIS TOWER FEATURES A 16" LAZY SUSAN IN THE BASE WHICH ALLOWS IT TO ROTATE 360°



Rotating / Open View



Back View



Closed / Front View

ALL LEANERS ON PAGE 23 & 24 ARE AVAILABLE WITH THIS TOWER. JUST ADD ITEM# AND -575

NOTE: PLEASE BE SURE TO SPECIFY VELVET, HOOK AND SWIVEL COLOR WHEN ORDERING. SEE PAGE 1 FOR OPTIONS.



**1035-325 SHAKER
SHOE LEANER**

26½" W x 24" D x 72" H

Box Dimensions

12½" D x 20" W x 63½" H

Shown in Brown Maple with Rich Tobacco Stain



**1035-400 SHAKER
HAT STORAGE LEANER CABINET**

26½" W x 24" D x 71" H



Front view rotating

This tower features a 16" lazy susan in the base which allows it to rotate 360°

NOTE: ALL LEANER FRAMES ON PAGES 23 & 24 ARE AVAILABLE ON ALL UNITS ON THIS PAGE.

USE FRAME NUMBER AND
ADD -325 FOR SHOE LEANER
ADD -400 FOR HAT STORAGE
ADD -500 FOR STORAGE TOWER



**1034-500 TRADITIONAL SHAKER
STORAGE TOWER** Back View

21" W x 19" D x 71" H

(top cap on mirror - 23" W)

Box Dim. 21"W x 18"D x 66"H

Comes standard with 4 adjustable shelves.



1042-104 RENO STORAGE LEANER

21" W x 19" D x 72" H

Shown in Barn Floor Brown Maple, White Paint with Black Glaze,



1047-104 MILANO STORAGE LEANER

21" W x 19" D x 72" H

Shown in White Paint.



Side View

**PAINT AND GLAZE UP-CHARGES APPLY.
SEE PRICE LIST**

**3 LEANING SHELVES ON BACKSIDE.
INCLUDES 2 BASKETS AND 1 SCARF
RACK ON BACK.**

**THIS STORAGE LEANER
FEATURES A 16" LAZY SUSAN IN
THE BASE WHICH ALLOWS IT TO
ROTATE 360°**

**ON MIRRORS THAT ARE NOT
PAINTED BACKS WILL BE BROWN
TEMPERED MASONITE LIKE OUR
JEWELRY MIRROR BACKS.**



ALL LEANERS ON PAGE 23 & 24 ARE AVAILABLE WITH THIS STORAGE LEANER. JUST ADD ITEM# AND -104

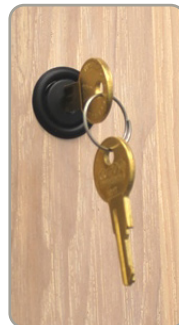
10 GUN RIFLE CABINET



**BLACK VELTEX BACK ALLOWS
VELCRO BACKED HOLSTERS TO
BE MOVED TO YOUR LIKING.**



Standard with 4 handgun holsters.
Extra holsters available.
See price list.



Standard with
drawer lock.

**STANDARD WITH
SEPARATE LOCKS
FOR DRAWER
AND MIRROR
FRAME.**

Barrel holder is lined with self
adhesive black felt, to protect
your barrels.

Veltex bottom to keep your
guns from moving around.

1035-300 SHAKER RIFLE CABINET

33" W x 15" D x 75" H

Inside Drawer Box Dimensions: 25"W x 11"D x 4½" H.

Drawer bottom covered in Black Velvet.

Holds 10 rifles and shotguns and 4 hand guns.

DRAWER LOCK

Our strongest lock!

This lock mounts into the side of the box.

The throw goes into the mirror frame.



**INSIDE
VIEW**



BLACK



**BRUSHED
NICKEL**



**ANTIQUE
BRASS**





1035-300 SHAKER RIFLE CABINET

26½" W x 24" D x 71" H

Box Dim. 10¼" D x 20" W x 63½" H

- Beveled mirrors are standard
- Standard Movable holsters (1-Left & 1-Right) Each holster includes a clip holder.
- Additional holsters may be ordered.

The Rifle Cabinet holds 6 rifles or shotguns and 2 hand guns. A Veltex backer allows 2 holsters to be arranged to your liking. Shelf depth is 9¼" in rifle cabinets, which will accommodate rifles or shotguns with scopes. Barrel holders are covered with self-adhesive felt for protection.

DRAWER LOCK

Our strongest lock!

This lock mounts into the side of the box.

The throw goes into the mirror frame.

Can be used on all cabinets on this page.



INSIDE VIEW



BLACK



BRUSHED NICKEL



ANTIQUE BRASS

ALL LEANERS ON PAGE 23 & 24 ARE AVAILABLE WITH RIFLE CABINET (ABOVE). JUST ADD ITEM# AND -300



2482-200 CAMBRIDGE GUN CABINET

25½" W x 5" D x 37½" H

(Box depth 4", 3-1/4" behind shelf)

Child proof magnetic lock standard.

4 holsters standard on Wall Gun Cabinets.

CHILD-PROOF MAGNETIC LOCK OPTION

Standard on all gun cabinets

Magnetic locks are concealed locks that use a magnetic key to open the lock. Locks can be disengaged by moving red clip forward.

Standard on all gun cabinets.



**FITS ON GUN,
JEWELRY OR
MEDICINE
CABINET**

Look for the frames with this starburst in Wall Mirrors for more styles



CHEVAL MIRRORS



1001 ANTIQUE OVAL CHEVAL

25" W x 17" D x 67" H

Oval Mirrors are Not Available with Jewelry Boxes.



1006 BUNKER HILL CHEVAL

26" W x 18" D x 69½" H

Black Rope Standard



1007 BANBURY CHEVAL

26" W x 18" D x 69½" H

Setup charge applies if not in Red Oak, Brown Maple, Cherry, or QSWO.

All Cheval Mirrors come standard with Beveled Mirrors and are solid hardwood. Width dimension does not include swivels: add 2½" Available in oak, cherry, quartersawn white oak and brown maple. See price list for other species.



To add jewelry box add -105 for this style box

NOTE: MOST MIRROR FRAMES ARE 21" OUTSIDE NOT INCLUDING TOPS. MIRROR OPENING 16"



1008 RENO CHEVAL

26" W x 18" D x 68¾" H

Shown in barnfloor brown maple.



1009 OPEN TOP MISSION CHEVAL

26" W x 18" D x 70½" H



1010 SHAKER CHEVAL

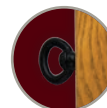
26" W x 18" D x 68" H

Shown in barnfloor brown maple.



To add jewelry box add -110 for this style box

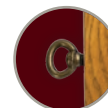
MIRROR SWIVELS



Black



Brushed Nickel



Antique Brass



**1011 TRADITIONAL
SHAKER CHEVAL**
26" W x 18" D x 69" H



**1012 ANTIQUE SHAKER
CHEVAL**
26" W x 18" D x 68" H



1013 CLASSIC SHAKER
26" W x 18" D x 70" H



1021 LEXINGTON OVAL CHEVAL
26" W x 17" D x 75" H
Available with 48" box only.



**1023 COLONIAL MISSION
CHEVAL**
26" W x 18" D x 68¹/₄" H



1028 ARLINGTON CHEVAL
26" W x 18" D x 72¹/₂" H
Setup charge applies if not in Red Oak, Brown Maple, Cherry, or QSWO.

LEANER MIRRORS WITH SUPPORT



1034 TRADITIONAL SHAKER LEANER
23" W x 13½" D x 67¾" H



1035 SHAKER LEANER
21" W x 13½" D x 67" H
ADD RIVET DETAIL FOR 1042 RENO LEANER.



1036 OPEN TOP MISSION LEANER
23" W x 13½" D x 71" H



1037 ANTIQUE SHAKER LEANER
21" W x 13½" D x 68½" H

- For jewelry boxes add -101
- For mega jewelry boxes add -102
- For rotating jewelry boxes add -103
- For rotating storage leaner add -104

- For rifle cabinets add -300
- For 10 gun rifle cabinet add -305
- For hat storage leaner add -400
- For storage tower add -500

- For jewelry/rifle add -515
- For jewelry/basket add -525
- For jewelry/armoire add -550
- For jewelry/shoe add -575

All leaner mirrors have supports that fold in for storage. All mirrors on page 23 & 24 are available with options listed above. Add item number before -. Example: 1044-101



1038 CLASSIC SHAKER
24½" W x 13½" D x 70" H



1039 BUNKER HILL LEANER
24½" W x 13½" D x 70" H



1040 BANBURY LEANER
24½" W x 13½" D x 70" H
Setup charge applies if not in Red Oak, Brown Maple, Cherry, or QSWO.



1043 SONOMA LEANER
24½" W x 13½" D x 67" H
Heavy Distressing

matches

Troyer Ridge
FINE BEDROOM FURNITURE



1044 BARN WOOD TOP LEANER

23¾" W x 13" D x 68¼" H



1045 ARLINGTON LEANER

24½" W x 13½" D x 70" H



1047 MILANO LEANER

24" W x 13½" D x 66" H
Shown in white paint.



1050 HARTFORD LEANER

24" W x 13½" D x 71" H
Shown with rough sawn option.
Add -RS when ordering Rough Sawn

- For jewelry boxes add -101
- For mega jewelry boxes add -102
- For rotating jewelry boxes add -103
- For rotating storage leaner add -104

- For rifle cabinets add -300
- For 10 gun rifle cabinet add -305
- For hat storage leaner add -400
- For storage tower add -500

- For jewelry/rifle add -515
- For jewelry/basket add -525
- For jewelry/armoire add -550
- For jewelry/shoe add -575

All leaner mirrors have supports that fold in for storage. All mirrors on page 23 & 24 are available with options listed above. Add item number before -. Example: 1044-101



1053 BROOKLYN LEANER

25¾" W x 13½" D x 70½" H



1055 BROOKLYN SHAKER LEANER

23" W x 13½" D x 69" H



1056 TRENTON SHAKER LEANER

25" W x 13½" D x 68" H



1058 BARNDOR TRACK LEANER

23¾" W x 13" D x 71½" H

matches

Criswell

Setup charge applies for 1053 & 1055 if not in Red Oak, Brown Maple, Cherry, or QSWO.

SANTA FE CHAIR SIDE TABLES



**6010 LB-PS SANTA FE PLANK TOP
CHAIR SIDE TABLE**
16" W x 22" L x 24¾" H
Shown with Large Basket and Power Strip options.



Santa Fe plank top detail



2 outlets & 2 USB ports
Power strip will vary from picture shown



**6015 SANTA FE PLAIN TOP
CHAIR SIDE TABLE**
16" W x 22" L x 24¾" H, 1" top
Shown with small basket option.
Add SB when ordering for basket option.



Santa Fe plain top detail



2410 VALET

Power Strip Optional
18½" W x 18" D x 53" H

2411 VALET

Power Strip Standard
18½" W x 18" D x 53" H

A tray big enough to hold a wallet, cell phone, plus keys comes standard.

Power strip with 2 USB ports & 2 Outlets
Brands may vary. Standard on some



Power strip will vary from picture shown



2412 MISSION VALET

Power Strip Optional
18½" W x 18" D x 53" H



2413 MISSION VALET

Power Strip Standard
18½" W x 18" D x 53" H

What was once known as a Men's Valet can also be used in a bathroom to hold a bathrobe and towels or simply to display scarves for her. What makes this Valet unique is that it is built out of solid hardwood, which allows you to match your existing Bedroom, Office, or Bathroom.

The hanger is 2" thick, which maintains a nice body for your suit coat or sports coat and is designed not to leave hanger marks. The pants, ties, and scarf rods are ¾" round to eliminate creasing.

Available in most species
See price list for available species

MAGAZINE RACKS/PLANT STANDS



6006 MISSION PLANKTOP MAGAZINE RACK
13½" W x 20¾" L x 23¼" H, 1" top



6003 MISSION MAGAZINE RACK
13½" W x 20½" L x 23" H, ¾" top

All magazine racks above have wrought iron bases and wooden tops.



plank top detail



black only *color may vary



COUNTRY PLANT STANDS

3001 - 25"H	
3002 - 30"H	Top 15" Round
3003 - 35"H	Base - 17½"



MISSION PLANT STANDS

3007 - 25"H	
3008 - 30"H	Top 14" Square
3009 - 35"H	Base - 18"



4001 COUNTRY QUILT RACK
16" D x 32" L x 36" H



4003 MISSION QUILT RACK
16" D x 32" L x 36" H



4004 SHAKER QUILT RACK
16" D x 32" L x 36" H



5001 COUNTRY HALL TREE
21" W x 21" D x 72" H



5003 MISSION HALL TREE
21" W x 21" D x 64" H

ROUGH SAWN OPTIONS

This page shows the rough sawn options. This can be added to most frames without a profile. To order add -RS behind Item number.

Most Wall mirrors are available in Rough Sawn. Add -RS behind item number when ordering.



See pages 23 & 29 for Wall Mirrors



Rough Sawn shown.
See pages 3-6 to order.
Add -RS behind item number when ordering.



See pages 23 & 24 to order. Add -RS behind item number when ordering

NOTE: Only the mirror frames will be rough sawn on the Rough Sawn Collection.



Rough Sawn detail.
See options in the price list for pricing. Add RS behind item number when ordering Rough Sawn.



See pages 20 to order. Add -RS behind item number when ordering

The section below shows barn floor Brown Maple options. This can be added to most frames without a profile.
To order add -BFBM behind Item number. With glued panels, glue will be noticeable.

Most Wall mirrors are available in Barn Floor Brown Maple. Not available if mirrors have profile frames or trim.



Shown on pg 13.



Shown on pg 21.

The section below shows Reclaimed Barn Wood options. Reclaimed is available on most frames without a profile.
To order add -RCBW behind Item number. With glued panels, glue will be noticeable.

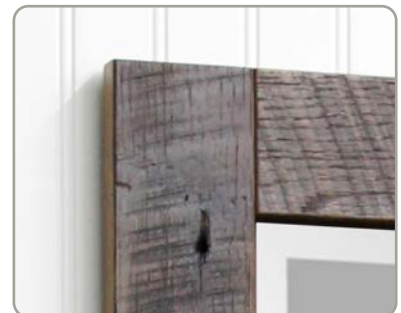
Most Wall mirrors are available in Reclaimed Barn Wood. Not available if mirrors have profile frames or trim.



Shown on pg 6.



Shown on pg 43.





2401 WALNUT LIVE EDGE WALL MIRROR

Mirror Only Dim. 19½ W x 31½" H
Overall frame width varies from 6" to 9" bigger than mirror.



2402 WALNUT LIVE EDGE WALL MIRROR

Mirror Only Dim. 31½ W x 19½" H
Overall frame width varies from 6" to 9" bigger than mirror.

NOTE: WALL CLEATS STANDARD ON WALL MIRRORS



1060 WALNUT LIVE EDGE LEANER

Mirror Only Dim. 16 W x 62" H
Frame Dim. can vary from 3½" to 5½"



No bark detail



Partial bark coverage detail



Full bark coverage detail

LIVE EDGE FEATURES & DETAILS

- The mirrors on this page are made out of slabs with Live Edge.
- Top and bottom crosspieces are also slabs, but go cross-grain to eliminate warping.
- Live Edge cannot be ordered clear and might have rustic character.
- Overall Dim. can vary from 6" to 9" for small mirrors, and 7" to 11" for large mirrors.
- On Live Edge, bark is not guaranteed, it may come off. It cannot be ordered with bark because we never know if it will have the bark when we receive the slab. If the slab has bark, we will ship it that way unless ordered otherwise. Partial bark coverage is possible. See inset above center.
- Due to the uniqueness of these mirrors, extended lead-times may be necessary.
- Live Edge detail varies according to grain structure. Some may be smooth, others rough.
- Available in Walnut and Wormy Maple



2403 RIVER RUN LIVE EDGE WALNUT WALL MIRROR

Mirror Only Dim. 16-19" W x 31" H
Overall frame width varies from 6" to 9" bigger than mirror.



2404 RIVER RUN LIVE EDGE WALNUT WALL MIRROR

Mirror Only Dim. 16-19" W x 31" H
Overall frame width varies from 6" to 9" bigger than mirror.

NOTE: WALL CLEATS STANDARD ON WALL MIRRORS



1061 RIVER RUN WALNUT LEANER

Mirror Only Dim. 15" W x 62" H
Frame Dim. can vary from 3½" to 5½"



River Run
Inside Mirror Detail.

RIVER RUN LIVE EDGE FEATURES & DETAILS

- The mirrors on this page are made out of slabs with Live Edge on the inside toward the mirror.
- Top and bottom crosspieces are also slabs, but go cross-grain to eliminate warping.
- River Run Live Edge cannot be ordered clear and might have rustic character.
- Overall frame Dim. can vary from 6" to 9" for small mirrors, and 7" to 11" for large mirrors.
- On Live Edge, bark is not guaranteed, it may come off. It cannot be ordered with bark because we never know if it will have the bark when we receive the slab. If the slab has bark, we will ship it that way unless ordered otherwise. Partial bark coverage is possible. See inset above center.
- Due to the unique nature of these mirrors, extended lead-times may be necessary.
- River Run Live Edge detail varies according to grain structure. Some may be smooth, others rough.
- Available in Walnut and Wormy Maple

WALNUT LIVE EDGE FLOATING SHELVES

ALL SHELVES CAN BE HUNG WITH LIVE EDGE TAPER ON TOP OR ON BOTTOM.

SHELF WIDTH CAN VARY
DEPENDING ON LIVE EDGE FROM
5" TO 8".



Round corner detail.
(optional).
Cost applies, see price list.

Round corners make
the Live Edge appear to
wrap around the sides,
continuing the same
contour as the front.

6020 - 24" FLOATING SHELF (STRAIGHT CORNER STANDARD)

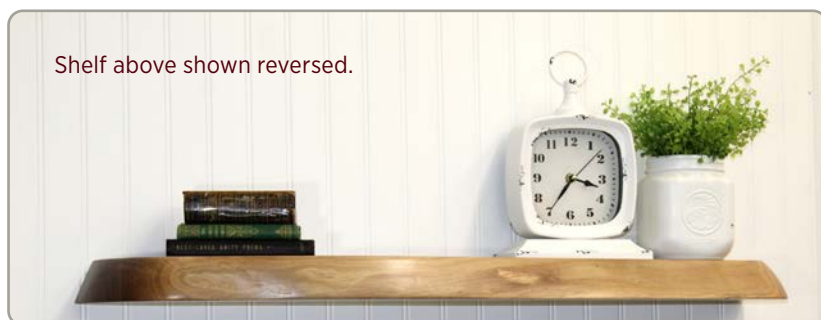


Mounting brackets.

Key hole slots for mounting up and
down, or left and right.

For mounting with up and down,
keyhole, mark and remove plate.
Center slot needs to be enlarged
for it to function.

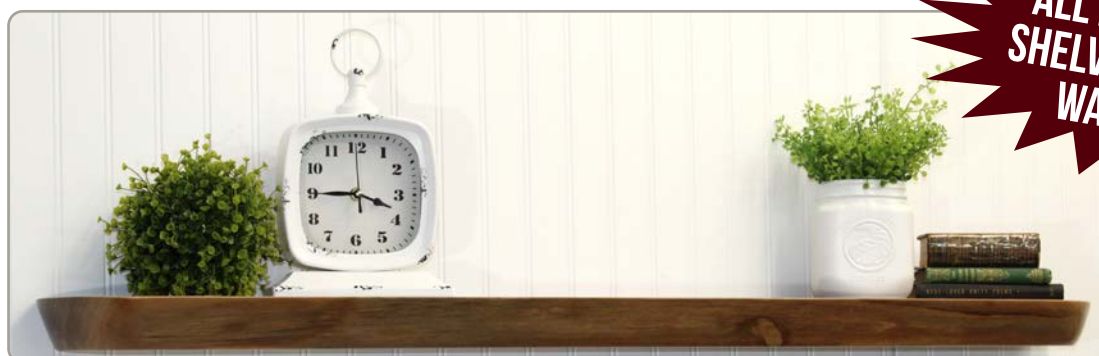
6025 - 36" FLOATING SHELF (SHOWN WITH OPTIONAL ROUND CORNER) *COST APPLIES, SEE PRICE LIST.*



Shelf above shown reversed.



Live edge floating shelf top view.



**ALL FLOATING
SHELVES ARE IN
WALNUT.**

6030 - 48" FLOATING SHELF (SHOWN WITH OPTIONAL ROUND CORNER) *COST APPLIES, SEE PRICE LIST.*



Back of shelf is slotted to allow mounting brackets to be put where your studs are located.
Key hole slots for mounting up and down, or left and right. 2" mounting lags supplied.



Shown horizontal.

**ALL MILANO COLLECTIONS HAVE
 $\frac{3}{16}$ " ROUND CORNER, SEAMED
AND POLISHED MIRRORS.**



2406 - 24X36 MILANO WALL MIRROR

Dim. 24½" to 36½"

Shown vertical. These mirrors can be hung both ways.

Wall Cleats standard
on top section.



2456 - BARN DOOR RAIL WALL MIRROR 37X25

Dim. 37½ x 25½"

Shown in cherry.

Also available in other wood species.

Beveled mirrors are standard.

CUSTOM SIZES AVAILABLE. CALL FOR QUOTE.

**FOR ALL BARN DOOR RAIL MIRRORS ADD 3 ½" IN
HEIGHT AND 3" IN WIDTH TO MIRROR FRAME DIM.**

MOUNTING LAGS AND SPACERS ARE INCLUDED.



2458 - BARN DOOR RAIL WALL MIRROR 25X37

Dim. 25½" to 37½"

Shown in reclaimed barn wood.

Also available in other wood species.

Beveled mirrors are standard.



2418 HARTFORD MIRROR

27½" W x 40" H



2418-RS HARTFORD MIRROR

27½" W x 40" H

Shown in Rough Sawn. See price list options.



2419 HARTFORD MIRROR

39½" W x 28" H

NOTE: WALL CLEATS STANDARD



Wall Cleats standard
on listed pages



Rough Sawn Detail. Add
RS behind item number for
Rough Sawn



2420 HARTFORD MIRROR

47½" W x 26½" H

The Hartford is an Early American design that features the old Mortise & Tenon look. The frames are 2½" wide, the sides are 1" thick, and the cross pieces are ¾" thick. This design also makes a great looking picture frame. Beveled mirrors are standard.

BROOKLYN/BROOKLYN SHAKER WALL MIRRORS

MOLDINGS ARE STOCKED IN RED OAK, BROWN MAPLE, RUSTIC CHERRY, CHERRY & QSWO.
ALL OTHER SPECIES SET UP CHARGES APPLY. SEE PRICE LIST.



2470 BROOKLYN WALL MIRROR
29" W x 40" H



2471 BROOKLYN WALL MIRROR
41" W x 28" H



2473 BROOKLYN WALL MIRROR
49" W x 26½" H



2472 BROOKLYN WALL MIRROR
27¾" W x 48" H

NOTE: WALL CLEATS STANDARD



2476 BROOKLYN SHAKER WALL MIRROR
26½" W x 38½" H



2477 BROOKLYN SHAKER WALL MIRROR
46¼" W x 25" H

Brooklyn Shaker Wall Mirrors Hang Both Ways



These mirrors are built by Country Corner Woodworking and match Criswell's Brooklyn Collection.



2435 COLONIAL MISSION WALL MIRROR

24½" W x 36½" H

*Fits on wall cabinets when displayed vertical only



2436 COLONIAL MISSION WALL MIRROR

44¼" W x 23" H

All Colonial mirrors have flat mirrors.



2451 HAMPTON WALL MIRROR

39⅜" W x 27⅞" H

*Fits on wall cabinets when displayed vertical only



2453 HAMPTON WALL MIRROR

47¼" W x 26" H

Wall Cleat System Details
Standard on all frames on this page.



All Hampton frames can be hung vertically or horizontally & have 4" frames with 1" bevel routs



2501 SONOMA WALL MIRROR

25½" W x 37½" H

*Fits on wall cabinets when displayed vertical only.
Shown in cherry.



SONOMA COLLECTION FEATURES A 1" THICK X 3" W FRAME WITH HEAVY DISTRESSING AND HAND WORN CORNERS.



2502 SONOMA WALL MIRROR

45¼" W x 24" H

Shown in brown maple.

ALL MODERN MISSION WALL MIRRORS HANG BOTH WAYS



2365 MODERN MISSION WALL MIRROR
26" W x 28½" H



2366 MODERN MISSION WALL MIRROR
37" W x 26" H



2367 MODERN MISSION WALL MIRROR
51" W x 30" H

Beveled mirrors are standard.



Wall Cleats standard
on listed pages



2368 MODERN MISSION WALL MIRROR
45¾" W x 33¾" H



2460 MISSION WALL MIRROR
26½" W x 40¾" H



FITS ON
GUN, JEWELRY
OR MEDICINE
CABINET



2463 MISSION WALL MIRROR
25" W x 48½" H



Wall Cleats standard
on listed pages

Beveled mirrors are standard.



2461 MISSION WALL MIRROR
38½" W x 28¾" H



2465 MISSION WALL MIRROR
46¼" W x 27½" H



2446 RICHMOND WALL MIRROR

31" W x 3¼" D x 42½" H



2447 RICHMOND WALL MIRROR

43" W x 3¼" D x 30½" H

Shown in Driftwood with Rich Tobacco shelf & pegs
Up charge applies for two-toned, see pricelist



Wall Cleat System Details
Standard on all Richmond mirrors.

All Richmond frames have 3½" sides & 3¼" shelf



2448 RICHMOND WALL MIRROR

50¾" W x 3¼" D x 29½" H

FITS ON
GUN, JEWELRY
OR MEDICINE
CABINET



2493 TRENTON SHAKER WALL MIRROR
28½" W x 37¼" H
Also Available with Leaded Glass - 2493LG



2494 TRENTON SHAKER WALL MIRROR
40½" W x 25¼" H
Also Available with Leaded Glass - 2494LG



Wall Cleats standard
on listed pages



2495 TRENTON SHAKER WALL MIRROR
27" W x 45" H



2496 TRENTON SHAKER WALL MIRROR
48¼" W x 23¾" H

NOTE: WALL CLEATS STANDARD



2480 CAMBRIDGE WALL MIRROR

24" W x 33 $\frac{3}{4}$ " H



2482 CAMBRIDGE WALL MIRROR

25 $\frac{1}{2}$ " W x 37 $\frac{1}{2}$ " H



2484 CAMBRIDGE WALL MIRROR

43 $\frac{3}{4}$ " W x 22" H



2486 CAMBRIDGE WALL MIRROR

45 $\frac{1}{4}$ " W x 24" H

Our Cambridge Mirror Collection features frames with very clean lines. Frames are 3" wide and 3/4" thick with no profiles. Edges are sanded lightly to remove sharp edge.

Wall cleats standard

Cambridge Style frames are available in:

Rough Sawn
Add -RS to item number
when ordering.



Barn Floor Brown Maple
Add -BFBM to item
number when ordering.



Reclaimed Barnwood
Add -RCBW to item
number when ordering.



Beveled mirrors are standard.

Wall cleats allow all these mirrors to be hung vertically or horizontally. Custom sizes available.



2352 ANTIQUE SHAKER WALL MIRROR
36" W x 24" H



2353 ANTIQUE SHAKER WALL MIRROR
48" W x 30" H



2351 ANTIQUE SHAKER WALL MIRROR
21" W x 45" H



2358 BUNKER HILL WALL MIRROR
24½" W x 46" H
Black rope standard



Wall Cleats standard
on listed pages



2359 BUNKER HILL WALL MIRROR
39½" W x 25" H
Black rope standard



2360 BUNKER HILL WALL MIRROR
51½" W x 31" H
Black rope standard

MIRRORS ON THIS PAGE ARE AVAILABLE IN ALL PROFILES.



2095 RECTANGULAR MOLDING MIRROR
25½" W x 37½" H Shown in 407



2051 RECTANGULAR MOLDING MIRROR
22¼" W x 44" H Shown in 402



Wall Cleats standard on listed pages



2324 30" ROUND WALL MIRROR
30" Dia., 3" Frame Only available in 406, 407 & 408.



2327 36" ROUND WALL MIRROR
36" Dia. Only available in 406, 407 & 408.

PROFILES



CC400
¾" x 2¼"



CC401
1" x 2¼"



CC402
1" x 2¼"



CC408
¾" x 3"



CC406
1" x 3"



CC407
1" x 3"

Round mirrors are hung with a single cable

Moldings are stocked in Red Oak, Cherry and Brown Maple. Other species available, setup charge applies. See price list.

MOLDING MIRRORS ARE NOT AVAILABLE IN RECLAIMED OR BARN FLOOR



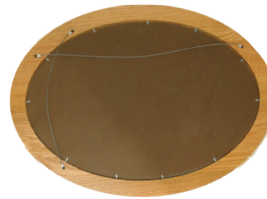
**2214 OVAL MOLDING
WALL MIRROR**
21" W x 30" H, Shown in 402



**2221 OVAL MOLDING
WALL MIRROR**
24" W x 32" H, Shown in 401



**2231 OVAL MOLDING
WALL MIRROR**
24" W x 36" H, Shown in 404



All our mirrors are protected with an 1/8" tempered masonite backer. 2 cables allow vertical or horizontal display on oval mirrors.

PROFILES



CC400
3/4" x 2 1/4"



CC401
1" x 2 1/4"



CC402
1" x 2 1/4"



CC408
3/4" x 3"



CC406
1" x 3"



CC407
1" x 3"

Moldings are stocked in Red Oak, Cherry and Brown Maple. Other species available, setup charge applies. See price list.

MOLDING MIRRORS ARE NOT AVAILABLE IN RECLAIMED OR BARN FLOOR

