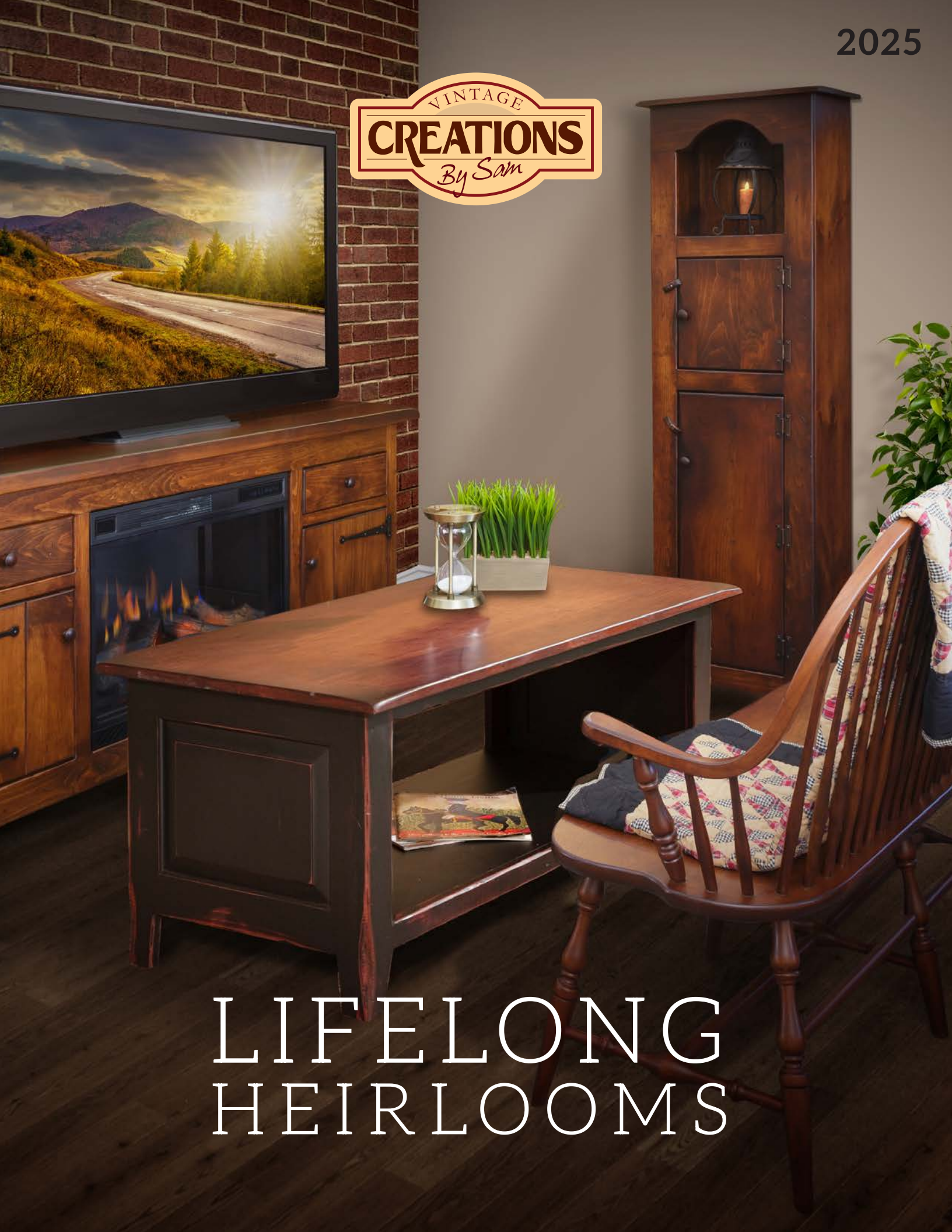


2025



LIFELONG  
HEIRLOOMS



# ADD SOME PATINA TO YOUR LIFE

In the beginning (1991), Sam Stoltzfus started a fulltime business in a horse barn making nothing but flower planters. In the years that followed, Sam added a whole lot more products, dedicating himself to a labor of love: creating a thriving family enterprise founded on hard work, honesty, and honoring the Lord. Today, Vintage Creations by Sam is a major enterprise offering furniture lines for dining rooms, bedrooms, living rooms, foyers, offices, bathrooms—even attics. What do all the pieces have in common? Fabulous finishes, with an antique appearance that's stunning to behold. Over the years, Sam and his team have become experts in the fine art of producing distressed and antique finishes, from milk paint techniques to crackle surfaces with durable catalyzed lacquer glaze. Whether sprayed on, hand brushed, or hand rubbed, the finishes are the work of artisans who produce the very finest heirloom quality pieces they can. You'll be delighted to have them grace your home.





FINISHES  
DEFINE WHO  
WE ARE.







**#4-C BARNDOR Kitchen Island**

56w x 36h x 30d

Standard 2" Pine Top

Available in 1" or 2" Pine or Wormy Maple Tops

See page 20



# TABLE OF CONTENTS

Dining

4-12

Chairs

13-17

Stools

18-19

Kitchen Islands

20-21

Dining Accents

22-39

Benches

40-45

Occasional

46-50

Accent Tables

51-52

Entertainment

53-55

Bookcases

56-59

Office & Den

60-61

Fireplace Accents

62-63

Bedroom

64-70

Wall Accessories

71-73



Kitchen Cabinets

74-75

Finish Options

76-77



# DINING TABLES

Almost any size is available, in 1" or 2" Pine or Wormy Maple.  
Also available in a rough cut top.



**#24-F 3' HARVEST TABLE**  
36w x 30h x 36d  
Shown in Black/Heritage Antique

So much happens at a dining room table. Mealtimes, obviously. But memories are made in so many other ways, too. Family game nights stay with you all your life. Simple chats or meaningful conversations both happen at a dining room table. Heart-to-heart relationship building, laughter, learning a new hobby—all center around a dining room table. Choose from square, oval, pedestal or bench styles, then enjoy the process of picking your own fabulous finish.



**#24-H 5' HARVEST TABLE**  
60w x 30h x 36d  
Shown in Bright White/Heritage Antique





**#4-B-4 JUMBO HOOSIER BUFFET**

64w x 34h x 21d



**#25-K 4' ROUND  
HARVEST TABLE  
W/ 2 - 9" DROPS**  
with drops down 30w x 48d

**#35-O FRENCH LADDERBACK SIDE CHAIR**  
18w x 39h x 17d



## DINING TABLES

All tables available in 30" or 36" high.

*Harvest and Farm  
Tables now available  
w/ barnwood tops  
call for pricing*



**#25-S 4' HARVEST TABLE**  
**W/2 - 8.5" DROPS**  
48w x 30h x 36d with drops down  
Shown in Heritage Antique



**#25-P 3' HARVEST TABLE**  
**W/2 - 8.5" DROPS**  
36w x 30h x 36d with drops down  
Shown in Barn Red/Heritage Antique



**#25-K 4' ROUND HARVEST TABLE**  
**W/ 2 - 9" DROPS**  
with drops down 30w x 48d  
Shown in Heritage Antique



Optional 4" turned leg



**#25-J 4' ROUND HARVEST TABLE**  
48" round x 30h  
Shown in Heritage Antique



**#25-T 4' NARROW HARVEST TABLE**  
**W/2-8.5" DROPS**  
48w x 30h x 18d  
Shown in Sage & Special Cherry Antique



All tables available in 36" or 42" wide or any custom width.  
1" or 2" thick tops available in Pine or Wormy Maple.

## DINING TABLES

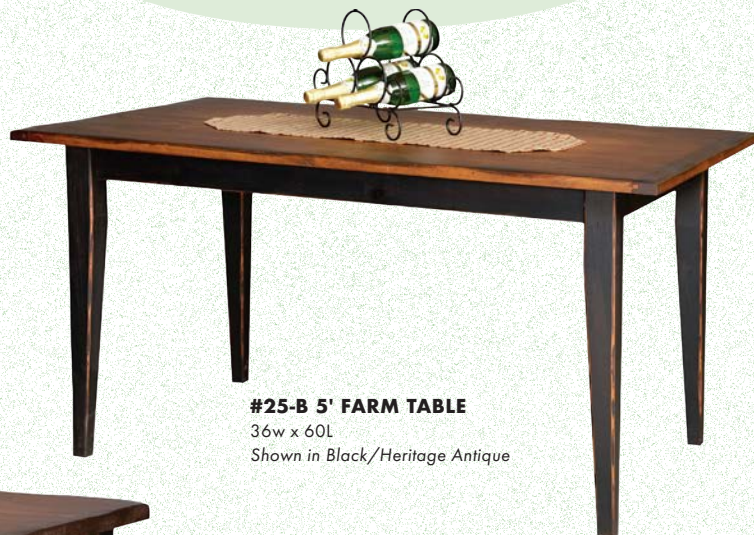
Harvest tables available in  
5/4 or 8/4 pine or wormy maple tops



### #24-K 8' HARVEST TABLE

36w x 96L  
Shown with optional 2" Top  
& optional 4" Shaker Legs  
Shown in Black/Heritage Antique

All farm tables have  
breadboard ends and a 4 plank  
look. Only available in 5/4 pine.



### #25-B 5' FARM TABLE

36w x 60L  
Shown in Black/Heritage Antique



### #24-K 8' HARVEST TABLE

36w x 96L  
Shown in Black/Heritage Antique with optional  
2" Top & optional 4" turned Legs



### #24 COMPANY BOARD

16" comes in set of 2  
Shown in Black/Heritage Antique

\*All Farm and Harvest tables  
available w/2 - 16" Company Boards



### #25-V 3' GATHERING TABLE

36w x 36L  
Shown in Black/Heritage Antique



### #25-N HARVEST SOFA BAR

60w x 36h x 18d  
Shown in Black/Heritage Antique  
Also available in 48" and 72" lengths  
and 30" or 36" heights

Pine or  
Wormy  
Maple tops  
available  
in 1" or 2"  
thickness.  
Shown w/2"  
rough cut  
Wormy  
Maple.





**#27- M 5' TRESTLE TABLE**  
72w x 30h x 42d  
Shown in Black/Heritage Antique



These tables are also available  
in a 36" counter height.



**#27-G 48" ROUND PEDESTAL TABLE**

48w x 30h w/18" Butterfly Leaf  
Shown in Bright White/Heritage Antique



**#27-A 54" ROUND PEDESTAL TABLE**

54w x 30h  
Shown in Sage/Heritage Antique



**#27-P 42" PEDESTAL  
EXTENSION TABLE**

42w x 30h  
Shown in Bright White/Heritage Antique

Various widths and heights available.  
See the "Choose A Table" section of your Price List



*Most any size  
available*

Ext. Tables Available in 42" wide (standard)  
36" wide  
48" wide  
1" top (standard)  
1¾" top



**#37 4' EXTENSION BENCH**

48w x 18h x 14d

Comes with 4 leaves, extends to 8'

Available in a 5' extension as #37-T

Shown in Black/Heritage Antique



**#27-R 5' EXTENSION TABLE**

60w x 42h x 30d

Shown in Black/Heritage Antique



Shown with 4 leaves. Up to 12 available.  
Only available in brown maple and wormy maple.

\*up to 4 leaves can be stored within the table  
(2 leaves with skirts and 2 without).  
Storage box available for leaves.









**#25-J 4' ROUND HARVEST TABLE**

Shown W/3" turned legs

Shown in Black/Heritage Antique

**#36 WINDSOR SIDE CHAIRS**

Shown in Black Antique



# CHAIRS



Windsor, Thumbback, Ladderback, and many more. the vintage chair you're looking for is here, in arm or side-arm versions. Stools are available as well. And when you add up all the finish possibilities—antiqued (12 choices), and distressed (14 choices)—you get a vast array of possible looks sure to satisfy your taste, no matter what it is. So pull up a seat, browse our catalog, and choose the chair you'll love for years to come.

**#36-Q ROYAL THUMBBACK ARM CHAIRS**  
*Shown in Black/Heritage Antique*



## CHAIRS

Most chairs are also available in a counter stool height.



**#34-P XBACK ARM CHAIR**  
18w x 38h x 16d  
Shown in unfinished Wormy Maple



**#34-Q XBACK SIDE CHAIR**  
18w x 38h x 16d  
Shown in unfinished Wormy Maple



**#34-R XBACK COUNTER STOOL**  
18w x 44h x 17d  
Shown in Black/Heritage Antique



**#35-M COUNTRY LADDERBACK ARM CHAIR**  
18w x 39h x 17d  
Shown in Black/Heritage Antique



**#35-L COUNTRY LADDERBACK SIDE CHAIR**  
18w x 40h x 17d  
Shown in unfinished Wormy Maple  
Available with arms

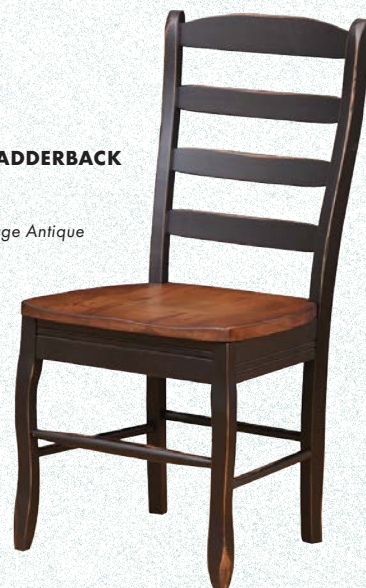


**#33-L RAVEN SIDE CHAIR**  
19w x 40h x 18d  
Shown in Bright White/Mocha Antique  
Available in smooth or rough cut and available with arms



**#35-P FRENCH LADDERBACK ARM CHAIR**  
18w x 39h x 17d  
Shown in Black/Heritage Antique

**#35-O FRENCH LADDERBACK SIDE CHAIR**  
18w x 39h x 17d  
Shown in Black/Heritage Antique





Most chairs are also available in a counter stool height.

## CHAIRS



Wood Seat



Also  
available  
with finial



Woven Seat



Also  
available  
with finial



Available with wood  
or woven seat

### #36-R ROYAL LADDERBACK SIDE CHAIR

19w x 44h x 17d - Wood Seat

Shown in Black/Heritage Antique

### #36-S ROYAL LADDERBACK ARM CHAIR

20w x 41h x 17d -Wood Seat

Shown in Black/Heritage Antique



### #33-I WINFIELD SIDE CHAIR

19w x 40h x 18d

Shown in Bright White/Heritage Antique

Available in smooth or rough cut and available with arms



### #34-T TALL MISSION SIDE CHAIR

18w x 39h x 18d -Wood Seat

Shown in Black/Heritage Antique

Available with arms



### #36-O THUMBBACK SIDE CHAIR

18w x 36h x 16d

Not available with arms

Left shown in Bright White/Heritage Antique

Above shown in Heritage Antique

Right shown in Black/Heritage Antique



### #33-F PRAIRIE SIDE CHAIR

18w x 39h x 18d -Wood Seat

Shown in Black/Heritage Antique

Available with arms

Available in smooth or rough cut



Most chairs are also available in a counter stool height.



Available  
as arm chair

**#36-M DUXBERRY SIDE CHAIR**

24w x 44h x 17d

Shown in Black/Heritage Antique

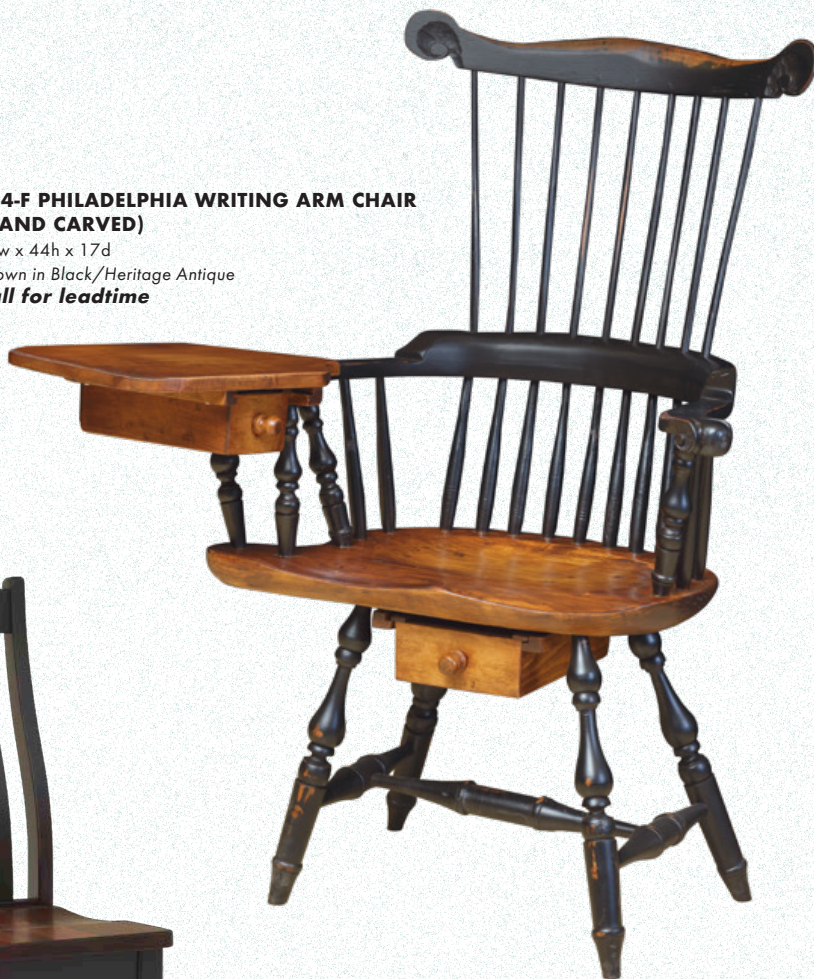
Available with arms

**#34-F PHILADELPHIA WRITING ARM CHAIR  
(HAND CARVED)**

30w x 44h x 17d

Shown in Black/Heritage Antique

**Call for leadtime**



**#33-A CAMBRIDGE SIDE CHAIR**

**#33-B CAMBRIDGE ARM CHAIR**

**#33-C CAMBRIDGE COUNTER STOOL**

18w x 40h x 17d

Shown in Black/Heritage Antique

Available in smooth or rough cut

Available with arms



**#36-C FARMHOUSE SIDE CHAIR**

18w x 40h x 17d

Shown in Black/Heritage Antique

Not available with arms



**#33-E SILVERTON SIDE CHAIR**

18w x 40h x 17d

Shown in Heritage Antique

Available with arms

Available in smooth or rough cut



Most chairs are also available in a counter stool height.

## CHAIRS



**#36-A WINDSOR ARM CHAIR**

20w x 41h x 18d

*Shown in Black Antique*



**#36 WINDSOR SIDE CHAIR**

19w x 41h x 19d

*Shown in Black Antique*



**#35-R ROYAL WINDSOR SIDE CHAIR**

18w x 38h x 17d

*Shown in Black Antique*



**#35-S ROYAL WINDSOR ARM CHAIR**

20w x 38h x 17d

*Available as side chair*

*Left shown in Black Antique*

*Right shown in Butter Cream/Heritage Antique*



**#36-P ROYAL THUMB BACK SIDE CHAIR**

18w x 37h x 17d

*Shown in Black/Heritage Antique*



**#36-Q ROYAL THUMB BACK ARM CHAIR**

20w x 36h x 18d

*Shown in Black/Heritage Antique*



# STOOLS

For the higher gathering tables and Islands there's a perfect stool to match. Once you've chosen from the many options, all you need to do is pick that perfect finish.



**#36-I BIG BENNY SWIVEL COUNTER STOOL**

19w x 24h  
Shown in Black/Heritage Antique



**#36-J ROUND STOOL (NON SWIVEL)**

15w x 24h  
Shown in Antiqued White/Antiqued Special Cherry



**#34-L SADDLE STOOL WITH HANDLES**

18w x 24h x 11d  
Shown Unfinished







**#34-N ROYAL LADDERBACK  
COUNTER STOOL (NON SWIVEL)**  
18w x 42h x 18d  
*Shown unfinished*



**#34-M COUNTRY SADDLE  
STOOL**  
11w x 24h x 18d  
*Shown in Black/Heritage Antique*



**#35-Y ROUND SWIVEL STOOL**  
24" high  
*Shown in Black/Heritage Antique*



**#36-W ROYAL LADDERBACK  
SWIVEL COUNTER STOOL**  
18w x 42h x 18d  
*Shown in Black/Heritage Antique*



**#34-U TALL MISSION  
COUNTER STOOL**  
18w x 42h x 18d  
*Shown in Black/Heritage Antique*



**#36-I WINDSOR  
SWIVEL STOOL**  
17w x 41h x 17d  
*Shown in Black/Heritage Antique*



Island and Table Top available in 1" or 2" thick Pine or Wormy Maple.  
Barnwood tops are available in 2" thickness.



FRONT SIDE



BACK SIDE

**#4-C X-BARN DOOR  
KITCHEN ISLAND**  
**1/4" WORMY MAPLE TOP**  
56w x 36h x 30d  
10" back overhang  
Shown in Black/Heritage Antique



**#4-H-5 4' NARROW  
KITCHEN SAVER**  
**With 2 - 8 1/2" DROPS**  
48w x 36h x 18d  
Shown in Taupe/Heritage Antique



**#4-C BARNDOOR  
KITCHEN ISLAND**  
56w x 36h x 30d  
Standard 2" Pine Top  
Available in 1" or 2" Pine  
or Wormy Maple Tops



**#4-H-3 4' KITCHEN SAVER**  
**With 1 - 8 1/2" DROPS**  
48w x 36h x 26d  
Shown in Black/Heritage Antique



**#4-C-1 X-BARN DOOR BUFFET**  
Same as 4-M (shown above) w/no back overhang  
56w x 36h x 19d  
Shown in Black/Heritage Antique

# KITCHEN ISLANDS

The kitchen island is a great gathering spot for talking, eating and having great times. Before guests show up, it's the perfect place to prepare your foods, then, when guests arrive, it's the ideal serving place, buffet style. Ever more popular, the kitchen island is both functional furniture and an aesthetic focal point.





**#4-C-3-B MEDIUM COUNTRY KITCHEN ISLAND**  
3' x 4' Top with back overhang  
Shown in Black/Heritage Antique



**#4-C-3-A MEDIUM COUNTRY KITCHEN ISLAND**  
3' x 5' Top with 3 sided overhang Base: 45w x 22d  
Note: Doors & Drawers pull through both sides on all Country Kitchen Islands  
Shown in Heritage Antique



Designed to use against a wall but we can trim the backside to use in the open.

**3 Sided Overhang**

**#4-I SPACE SAVER ISLAND W/TRASH DRAWER & TRASH CAN**

Base is 34w x 36h x 17d, shown with 54w x 22d top  
Available in 54w x 30d  
Available w/o Island top as a Shaker Cabinet w/pull out trash bin #4-H-6  
Shown unfinished



**End Overhang**

**#4-C-1-A SMALL COUNTRY KITCHEN ISLAND**  
Base is 32w x 22d, shown with 48w x 24d end overhangs  
Shown unfinished



**3 Sided Overhang**

**#4-C-1-A SMALL COUNTRY KITCHEN ISLAND**  
Base: 32w x 22d  
Shown with 3' x 4' Top with 3 sided Overhang  
Shown in Black/Heritage Antique



# DINING ACCENTS

After the table and chairs, the most important pieces in a dining room are the accents—hutches, buffets, bookcases, and pantries. Microwave cabinets. Corner cupboards to display curios or store tablecloths, dishes, and dining room decor. Dry sinks, utility cupboards, and sideboards. Bookcases, jelly cupboards, recycling bins. Hunt boards, consoles, cutlery trays, and nesting trays. Let's face it, with variety like that, your dining room accent is definitely here!



**#4-B-3 JUMBO HOOSIER HUTCH**  
65w x 76h x 21d  
Shown in Black/Heritage Antique





**#4-B-4 JUMBO HOOSIER BUFFET**

64w x 34h x 21d

*Shown in Black/Heritage Antique*



Hutches available with lighting, bulbs in the top or LED strips on sides or undermount.



**#4-2 4' HOMESTEAD HUTCH**

53w x 80h x 20d

**#5-2 4' HOMESTEAD BUFFET**

**Base only** 53w x 34h x 20d

*Shown in Heritage Antique*

Also available in the 6' size #42-H

Also available with glass or raised panel doors in the top



**#4-B-1 LARGE HOOSIER HUTCH**

*Shown in Heritage Antique*

50w x 76h x 21d

*Shown in Heritage Antique*



**#1-B COLONIAL HUNTBOARD HUTCH**

43w x 80h x 13d

*Shown in Barn Red/Heritage Antique*



**#1-I COLONIAL HOMESTEAD HUTCH**

53w x 78h x 20d

*Shown unfinished*



**#4-A MEDIUM HOOSIER HUTCH**

36w x 74h x 18d

**#4-B MEDIUM MICROWAVE CABINET**

**Base only** 36w x 34h x 18d

*Shown in Black/Heritage Antique*



Available with  
Antique Glass



The Hoosier Hutch originates from the state of Indiana (called the Hoosier State.) In the earlier colonial days, it was the only kitchen cabinet.

**#4-B-1 LARGE HOOSIER HUTCH**

50w x 76h x 21d

**#4-B-2 LARGE HOOSIER BUFFET**

(Base only) 50w x 34h x 21d

Shown in Black/Heritage Antique



**#4-O 6' BARN DOOR HUTCH**

72w x 84h x 14d

Shown in Bright White/Honey Pine Antique

**#4P 6' BARN DOOR HUTCH**

(W/UPPER DOORS) NOT SHOWN

72w x 84h x 14d

**#4-Q BARN DOOR HUTCH**

BOTTOM ONLY

Shown on page 33



**#1 COLONIAL HUTCH**

42w x 78h x 12d

Shown in Buttercream/Heritage Antique



**#3-T COLONIAL HOOSIER HUTCH**

50w x 81h x 21d

Shown in Black/Heritage Antique



**#4-N 5' BARN DOOR HUTCH**

(W/UPPER DOORS)

60w x 84h x 14d

Shown in Black/Heritage Antique

**#4-J 5' BARN DOOR HUTCH**

(OPEN TOP) NOT SHOWN

60w x 84h x 14d

**#4-K BARN DOOR HUTCH**

BOTTOM ONLY

Shown on page 33



**#1-H COLONIAL SERVER HUTCH**

48w x 84h x 12d

Shown in Black/Heritage Antique

**#1-G COLONIAL SERVER**

BOTTOM ONLY OF THE ABOVE HUTCH

48w x 36h x 12d



All corner cupboards available w/various top doors.  
Lighting available with bulbs or LED strips



**#5-R-G 32" CORNER CUPBOARD  
W/TOP GLASS DOORS**  
32w x 72h x 14d (24" of Wall Space)  
Left shown in Black/Heritage Antique  
Right shown in Black/Buttercream Distressed



**#5-T 32" CORNER CUPBOARD  
W/SHORT TOP RAISED PANEL DOORS**  
32w x 72h x 14d (24" of Wall Space)  
Shown in Black/Heritage Antique



**#5-R 32" CORNER CUPBOARD**  
32w x 72h x 14d (24" of Wall Space)  
Shown in Black/Heritage Antique



All corner cupboards available w/various top doors.  
Available with Antique Glass

DINING ACCENTS



**#5-X 40" CORNER CUPBOARD**  
40w x 80h x 17d (28" of Wall Space)  
All corner cupboard also  
available with longer top doors  
Shown in Black/Heritage Antique



**#6 24" CORNER CUPBOARD**  
24w x 72h x 12d (18" of Wall Space)  
Shown in Heritage Antique



**#5-Z 48" CORNER CUPBOARD**  
46w x 80h x 18d (33" of Wall Space)  
Left shown in Barn Red/Taupe Antique  
Right shown in Sage/Buttercream Antique



Available with lighting, bulbs or LED strips.



**#18 SLANT CUPBOARD**

35w x 13h x 12d

Left shown in Ash/Heritage Distressed

Right shown in Advocado/Mocha Antique



**#3-A-G SMALL**

**JELLY CUPBOARD W/GLASS**

20w x 47h x 12d

Shown in Bright White Distressed



**#16 TOWER CAB**

32w x 32h x 14d

Left shown in Honey Pine Antique

Right shown in Sky Antique

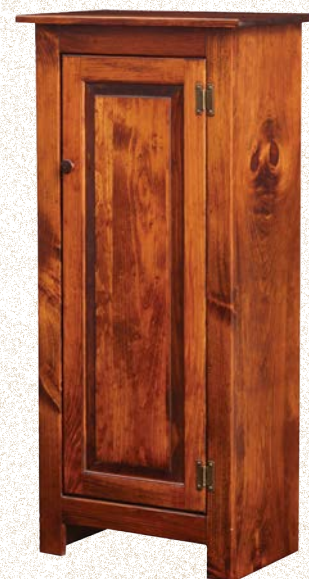


**#3-A SMALL**

**JELLY CUPBOARD**

20w x 47h x 12d

Shown in Bright White Distressed



**#3-A SMALL**

**JELLY CUPBOARD**

20w x 47h x 12d

Shown in Heritage Antique



**#76-B PANEL CHEST**

39w x 23h x 18d

Shown in Antique Denim/Heritage Stain





**#3-C 2 DOOR PANTRY**

34w x 72h x 12d

Shown in Heritage Antique



**#3-B 4 DOOR PANTRY**

34w x 72h x 12d

Shown in Special Cherry Antique



**#3-B-G 4 DOOR PANTRY  
W/GLASS**

34w x 72h x 12d

Shown in Mustard/Cream White Distressed  
Mustard color no longer available



**#4-B MEDIUM HOOSIER BUFFET**

36w x 34h x 18d

Shown in Ash/Heritage Antique



**#4-B-2 LARGE HOOSIER BUFFET**

50w x 34h x 21d

Shown in Special Cherry Antique





Coffee bars available with LED strips on sides and top



**#5-N MEDIUM PANTRY**  
30w x 72h x 17d  
Shown in Antique Ash/Heritage Stain



**#5-S BEVERAGE SERVER**  
30w x 37h x 17d  
Shown in Bright White/Mocha Antique



**#5-N-1 SMALL PANTRY**  
30w x 37h x 17d  
Top shown in Barn Red/Heritage Stain  
Right shown in Bright White/Heritage Stain



**#4-H-6 SHAKER CABINET  
W/PULL OUT TRASH BIN**  
40w x 36h x 17d  
Shown in Black Heritage Antique



**#5-I-1 SHAKER COFFEE BAR  
W/PULL OUT TRASH BIN**  
40w x 72h x 17d





**#4-T WINE BAR**  
30w x 72h x 17d  
Shown in Barn Red/Heritage Antique  
Also available in large sizes

Available with  
wine or coffee sign



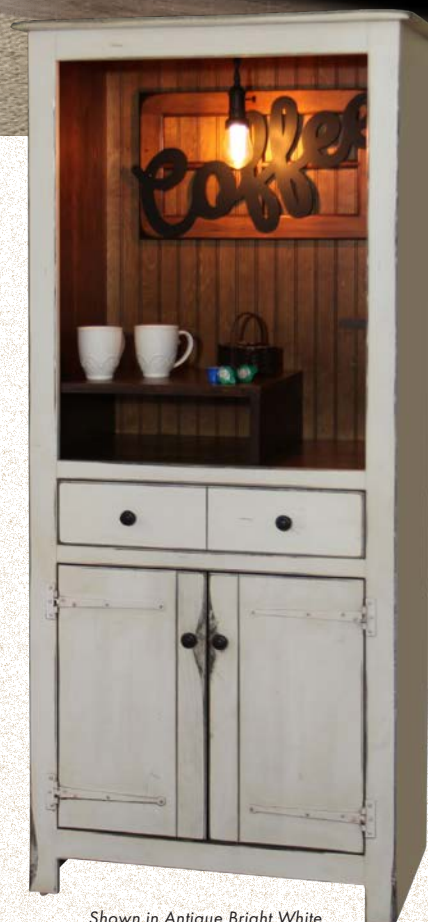
**#5-J LARGE COFFEE BAR**  
40w x 79h x 17d  
Shown in Antique Ash/Heritage Stain  
Also available w/top doors  
as a Large Pantry #5-M



Shown in Antique Sky



Shown in Antique Denim



Shown in Antique Bright White

**#5-K MEDIUM COFFEE BAR**  
30w x 72h x 17d



## DINING ACCENTS



### #1-D COLONIAL DRY SINK

42w x 42h x 12d

Shown in Sage/Heritage Antique



### #70 HIBACK DRY SINK

42w x 48h x 17d

Shown in Heritage Antique



### #75 SIDEBOARD

48w x 56h x 20d

Shown in Black/Heritage Antique



### #5-L SMALL COFFEE DRY SINK

30w x 42h x 17d

Shown in Ash/Mocha Antique



### #23-J SMALL DRY SINK

20w x 36h x 12d

Left shown in Poolside/Bright White Antique

Right shown in Black/Heritage Antique



### #23-I MEDIUM DRY SINK

34w x 36h x 12d

Above left shown in Cream White/Honey Pine Antique

Above right shown in Black/Heritage Antique

Right in Avocado/Mocha Antique







**#1-A COLONIAL BUFFET**

42w x 36h x 12d

Left shown in Buttercream/Heritage Antique

Right shown in Black/Heritage Antique



**#97 TV BUFFET COMBO**

Shown in Ash Antique Base & Mocca Stain

72w x 36h x 14d

Shown in Ash Antique Base/Mocha Stain



**#3-F 4' PIE SAFE**

32w x 46h x 15d

Left shown in Ash/Heritage Antique

Right shown in Sage/Heritage Antique



*Also available with  
raised panels*



**#4-Q 6' BARN DOOR BUFFET**

72w x 38h x 15d (Same as 96-D)

Also available in 60" width

Shown in Black/Heritage Antique

Also available:

**#4-K 5' BARN DOOR BUFFET**

60w x 38h x 15d

See page 25









**#23-Q DOUBLE RECYCLE BIN**  
28w x 32h x 12d (Includes Trash Cans)  
Shown in Black/Heritage Antique



**#5-1 BARN DOOR KITCHEN ISLAND**  
60w x 36h x 35d  
Includes Two Trash Bins  
Doors on both sides  
Shown in Black/Heritage Antique



**#23-O TRASH BIN**  
17w x 32h x 12d  
Includes Trash Bin  
Shown in Toupe/Michael's Cherry Antique



**#16-B DOUBLE VINTAGE CUPBOARD**  
50w x 69h x 14d  
Available with lights  
Shown in Black/Heritage Antique



**#23-O TRASH BIN**  
17w x 32h x 12d  
Shown in Sky Antique

*Also available with  
antique glass.*



Lighting available



**#1-C COLONIAL HUNTBOARD**  
42w x 38h x 12d  
Shown in Barn Red/Heritage Antique



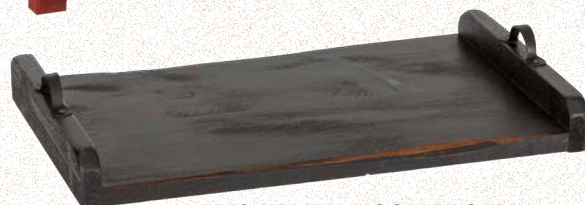
**#16-A VINTAGE CUPBOARD**  
28w x 69h x 14d  
Shown in Barn Red/Buttercream Antique

*Also available with  
antique glass.*



**#140 XL NOODLE BOARD**  
28w x 20d  
Shown in Heritage Antique

Available in  
smooth or  
rough cut



**#142 MEDIUM NOODLE BOARD**  
22w x 11d  
Shown in Antique Black



**#141 LARGE NOODLE BOARD**  
26w x 16d  
Shown in Heritage Antique



**#142 MEDIUM NOODLE BOARD**  
18w x 8d  
Shown in Heritage Antique



**#23-E HALL CONSOLE**  
34w x 32h x 12d  
Shown in Mustard Antique  
(Mustard no longer available)



**#23-G YANKEE CUPBOARD**  
20w x 32h x 12d  
Shown in Heritage Antique





**GATHERING TRAYS**

- #129 Sm 13 x 5 x 13
- #127 Med 18 x 5 x 13
- #125 Lg 24 x 5 x 13



**#126 SMALL GATHERING TRAY  
W/DRAWER** 12w x 6h x 12d

**#128 MEDIUM GATHERING TRAY  
W/DRAWER** 18w x 6h x 12d

**#130 LARGE GATHERING TRAY  
W/DRAWER - NOT SHOWN**  
23w x 6h x 12d



**#15 HONEY CUPBOARD**  
22w x 43h x 12d  
*Shown in Honey Pine Antique*



**#121 BREAD BOX**  
20w x 15h x 12d  
*Shown in Heritage Antique*  
*Available with various tins or  
raised panel doors*



**#3-H X-DOOR JELLY CUPBOARD**

38w x 40h x 14d  
Top shown in Bright White Antique & Heritage Stain  
Right shown in Denim & Heritage Antique Stain







**#23-S ONE DOOR STORAGE CABINET**  
 29w x 36h x 12d  
 Shown in Black/Heritage Antique



**#23-R 2 DOOR STORAGE CABINET**  
 42w x 36h x 12d  
 Shown in Black/Heritage Antique

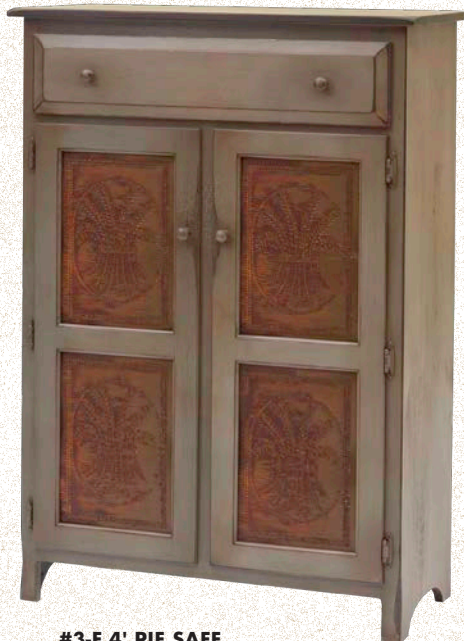




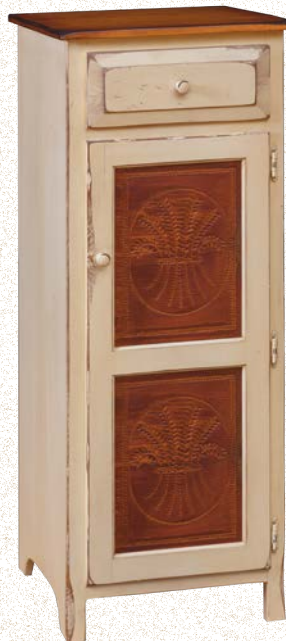
**#3-E 5' PIE SAFE  
(PUNCHED TIN)**  
32w x 62h x 14d  
Shown in Black/  
Heritage Antique



**#3-D LARGE JELLY CUPBOARD**  
34w x 48h x 12d  
Left shown in Special Cherry Antique  
Right shown in Sage Antique



**#3-F 4' PIE SAFE  
(PUNCHED TIN)**  
32w x 46h x 14d  
Shown in Antiqued Sky



**#3-G SMALL PIE SAFE  
(PUNCHED TIN)**  
18w x 46h x 14d  
Shown in Taupe/Heritage Antique



**#23-N X DOOR STORAGE CABINET**  
40w x 38h x 16d  
Shown in Bright White/Heritage Antique



**#4-R X-BARNDOR WINE CABINET**  
40w x 38h x 16d  
Shown in Barn Red Antique/Honey Pine



# BENCHES



Our variety of bench designs is staggering. More than any other piece, the bench spans a range of styles that stretch the meaning of the word as far as it can go. Basically, if you can sit on it, it's a bench. From there, the sky's the limit as to its form and function. Tall benches can double as coat racks or include armoires. Wide benches can open up for storage or incorporate cabinets. Low benches, made simply for sitting, can fit along a wall, taking up little space, or sport bowbacks to add elegance.



**#104 DEACON'S BENCH**  
38w x 35h x 17d  
*Shown in Sage Antique*





**#25-1 3' TAVERN TABLE  
WITH 2 DROP LEAFS**  
36w x 30h x 20d  
Shown in Black/Heritage Antique



## BENCHES



### #106 ENTRY BENCH

36w x 18h x 14d

Left shown in Black/Heritage Antique

Top shown in Sage/Heritage Antique

Right shown in Bright White/Heritage Antique



### #106-A 4' ENTRY BENCH

48w x 18h x 14d

Left shown in Sky Antique & Heritage Antique

Right shown in Black/Heritage Antique



### #106-B 5' DOUBLE ENTRY BENCH

60w x 18h x 14d

Shown in Heritage Stain Antique





**#102 2' SETTLE BENCH**  
27w x 68h x 17d  
Shown in Black/Distressed



**#100 4' SETTLE BENCH**  
50w x 68h x 17d  
Shown in Barn Red/Distressed



**#101 3' SETTLE BENCH**  
38w x 68h x 17d  
Shown in Black/Heritage Stain



**#103 3' LOW BACK SETTLE BENCH**  
38w x 57h x 17d  
Shown in Black/Distressed



## BENCHES



**#41 5' BENCH**  
60w x 17h x 12d  
(Shown with optional shelf)  
Shown in Heritage Antique



**#40 4' BENCH**  
48w x 17h x 12d  
Shown in Blue Distressed  
Also 3' and 6' available



**#38-6 4' FARM BENCH**  
46w x 18h x 14d  
Shown in Black/Heritage Antique



**#42 6' BENCH**  
72w x 17h x 12d  
Shown in Black Antique



**#34-B BOWBACK BENCH**

50w x 40h x 18d  
Shown in Black Distressed



**#34-C 4' WINDSOR BENCH**

51w x 40h x 18d  
Shown in Special Cherry Antique



**#99-A SPINDLE BENCH**

39" wide  
Shown in Sky/Heritage Antique



# OCCASIONAL



**#32-H LARGE ROUND DROP LEAF COFFEE TABLE**

36 round x 18h x 18d  
Shown in Black/Heritage Antique



**#32-I ROUND DROP LEAF END TABLE**

24w x 24h x 12d  
Shown in Bright White/Mocha Antique



Also available in a shorter length

**#32-G ROUND DROP LEAF HALL TABLE**  
30w x 30h x 13d

Another group that includes wide variety in both function and beauty, occasionals can stay put or get put away, as need dictates. Choose from coffee tables, lamp tables, side tables, tables with drop leaves, chests, and more. A particularly elegant, modern piece we love is the drop leaf coffee table pictured at left. It combines both the traditional and the futuristic in one piece. Once you pick your occasional piece, remember, depends on the finish.



**#32-F LARGE ROUND DROP LEAF SOFA TABLE**

42 round x 30h x 16d  
Shown in Bright White/Mocha Antique

**#32-F-1 NARROW DROP LEAF SOFA TABLE**

42w x 30h x 13d  
Shown in Bright White/Mocha Antique





**#28-A COFFEE TABLE CHEST**

44w x 19h x 20d

Shown in Black/Heritage Antique



**#28-B COFFEE TABLE CHEST W/SHELF**

44w x 19h x 20d

Shown in Black/Heritage Antique



**#28-C COFFEE TABLE CHEST W/DRAWERS**

44w x 19h x 20d

Shown in Black/Heritage Antique



**#32-A DROP LEAF COFFEE TABLE**

42w x 18h x 13d

Shown in Black/Heritage Antique



**#32-D LARGE DROP LEAF COFFEE TABLE**

42w x 18h x 18d

Shown in Black/Heritage Antique



**#32-B DROP LEAF END TABLE**

24w x 24h x 13d

Shown in Black/Heritage Antique

**#32-E LARGE DROP LEAF SOFA TABLE**

42w x 30h x 18d

Shown in Black/Heritage Antique



**#32-C DROPLEAF HALL TABLE**

32w x 30h x 13d

Shown in Poolside Antique & Heritage Stain



**#32 DROP LEAF SOFA TABLE**

42w x 30h x 13d

Top shown in Driftwood Antique Base & Driftwood Stain Top

Left shown in Black/Heritage Antique







**#31 SHAKER END TABLE**

22w x 26h x 18d

Left shown in Bright White/Heritage Antique

Right shown in Black/Heritage Antique



**#30 SHAKER SOFA TABLE**

48w x 30h x 12d

Shown in Black/Heritage Antique



**#28 SHAKER COFFEE TABLE**

48w x 17h x 48d

Shown in Black/Heritage Antique



**#31-3 END TABLE CHEST W/DOORS**

20w x 24h x 20d

Shown in Black/Heritage Antique



**#31-1 END TABLE CHEST W/SHELF**

20w x 24h x 20d

Shown in Black/Heritage Antique



**#28 SHAKER COFFEE TABLE**

48w x 17h x 48d

Shown in Bright White/Heritage Antique



**#25-H 4' TAVERN TABLE**

48w x 30h x 20d

Shown in Black/Heritage Antique

3' Tavern Table also available as #25-I



Designed after the early american dough box, but with a side flip door for easy storage.

**#120 DOUGH BOX**

36w x 30h x 16d

Shown in Sage/Heritage Antique





**#31-A SHAKER LAMP TABLE**  
22w x 30h x 23d  
Shown in Buttercream/Heritage Antique



**#32-K 24" ROUND END TABLE**  
24 x 24  
Shown in Black/Heritage Antique



**#32-J 42" ROUND COFFEE TABLE**  
42w x 18d  
Shown in Black/Heritage Antique



**#76-B PANEL CHEST**  
39w x 23h x 18d  
Shown in Sky/Heritage Antique





**#29-A HARVEST END TABLE**

20w x 25h x 20d

Shown in Ash/Heritage Antique



**#32-O X FARMHOUSE END TABLE**

17w x 23h x 17d

Shown in Black/Heritage Antique



**#32-P FARMHOUSE COFFEE TABLE**

41w x 19h x 20d

Shown in Black/Heritage Antique



**#29-B HARVEST COFFEE TABLE**

24w x 18h x 48d

Shown in Ash/Heritage Antique





**#44 SQUARE PLANT STAND**

12w x 27h x 12d

Shown in Special Cherry Antique

Have a room you want to make cozy? An accent table is the perfect answer. Small enough to fit almost anywhere, and in styles and shapes to fit any decor, accent tables are an understated but crucial finishing touch. And our box table even contains space to store things if you need your accent table to do double duty.



**#45-A 20" SQUARE LAMP TABLE**

20w x 28h x 20d

Shown in Denim/Heritage Antique

24" and 16" also available

# ACCENT TABLES



## ACCENT TABLES



**#47 24" ROUND LAMP TABLE**  
24w x 27h  
Shown in Black/Heritage Antique



**#43 BOX TABLE**  
20w x 27h x 12d  
Shown in Black/Heritage Distressed



**#47-A 30" ROUND LAMP TABLE**  
30w x 37h  
Shown in Black/Heritage Antique



**#45 16" SQUARE LAMP TABLE**  
16w x 28h x 16d  
Available in 20" as well as 24"  
Shown in Black/Heritage Antique



**#46 20" ROUND LAMP TABLE**  
20w x 27h  
Shown in Heritage Antique



**#46 20" ROUND LAMP TABLE**  
20w x 27h  
Shown in Black/Heritage Distressed



# ENTERTAINMENT



**#96-F 6' BARN DOOR TV HUTCH**  
72w x 84h x 14d  
Shown in Bright White/Honey Pine Antique

Entertainment centers are a virtually necessity in today's homes. And the vintage look of our units creates a fascinating contrast with the cutting-edge 21st-century technology the pieces house. Choose an entertainment center that hides your TV and maintains your vintage atmosphere, or one that displays it center stage. TV stands can be flanked by side pieces to add storage for decor, photos, books, and more. We can custom build our units to your dimensions to fit both your TV and your room space.



**#96-L X-BARNDOOR SERVER/TV STAND**  
Shown in Bright White & Heritage Stain  
64w x 34h x 17d







**#97-S-U-G 5' FLAT SCREEN (4 PC. UNIT)**

111w x 78h x 20d  
TV Opening is 60" wide  
Shown in Black/Heritage Antique



**#97-Q 5' FLAT SCREEN TV CABINET**

60w x 78h x 20d  
TV Opening 56w x 44h  
Shown in Black/Heritage Antique



**#97-X 3-PIECE ENTERTAINMENT CENTER**

99w x 80h x 20d  
Also sold separate as Bookcase or Stereo Cabinet  
Shown in Black/Heritage Antique



**#96-D 6' BARN DOOR TV STAND**

72w x 38h x 15d (Same as 4-Q)  
Also available in 60" width  
Shown in Bright White/Honey Pine Antique



**#97-I CORNER TV STAND W/DOORS**

39w x 35h x 22d  
Takes 29" of wall space  
Also available with electric fireplace see pg 63  
Shown in Black/Heritage Antique



**#97-S 5' FLAT SCREEN TV STAND**

60w x 27h x 20d  
Shown in Black/Heritage Antique





**#97 TV/BUFFET COMBO**

72w x 36h x 15d

Also available w/ electric fireplace in center  
Shown in Black/Heritage Antique



**#97-Y COLONIAL TV STAND**

63w x 32h x 13d

Shown in Black/Heritage Antique



**#97A TV/BUFFET COMBO W/FIREPLACE**

72w x 36h x 15d

May be ordered w/o drawers for TV boxes

Above shown in Black/Heritage Antique

Below shown in Buttercream/Heritage Distressed



Shown with optional black hinges



**#97-G LARGE ENTERTAINMENT SIDE PIECES**

26w x 72h x 19d

Also sold separate as Bookcase or Stereo Cabinet

Shown in Barn Red/Buttercream Antique





**#19-B 3' NARROW BOOKCASE**

20w x 32h x 12d

Shown in Mustard Distressed

Mustard color no longer available

Besides the obvious function of holding books, these versatile pieces can do so much more. Display your favorite treasures, use with doors or drawers as storage, or pair with entertainment centers as side pieces, choosing a finish to either match or complement.



**#21 6' BOOKCASE WITH BOTTOM DOORS**

36w x 72h x 12d

Left shown in Heritage Antique

Right shown in Black/Heritage Antique

# BOOKCASES





**#23-L SMALL CURIO CABINET**

20w x 72h x 12d

Left shown in Sage/Heritage Antique

Right shown in Barn Red/Heritage Distressed



**#23 4' BOOKCASE  
W/BOTTOM DOORS**

34w x 48h x 12d

Top Left shown in Blue/Heritage Antique

Top Right shown in Buttercream/Heritage Antique

Left shown in Paprika Antique/Heritage Stain

Also available with  
antique glass.



**#20 6' BOOKCASE**

34w x 72h x 12d

Shown in Barn Red Antique



**#23-A LARGE LIBRARY CABINET**

22w x 72h x 12d

Shown in Barn Red/Heritage Antique



**#23-M COLLECTORS CURIO**

46w x 69h x 12d

Shown in Bright White/Mocha Antique

Comes with bulb lighting

May be upgraded to LED lights on sides



## BOOK CASES



**#20-1 6' BOOKCASE  
W/1 DRAWER**  
34w x 72h x 12d  
Shown in Black/Heritage Antique



**#20-2 6' BOOKCASE W/2 DRAWERS**  
34w x 72h x 12d  
Left shown in Barn Red/Heritage Antique  
Right shown in Black/Heritage Antique



**#23-K LARGE CURIO CABINET**  
34w x 72h x 12d  
Left shown in Barn Red/Buttercream Antique  
Right shown in Buttercream/Heritage Distressed



**#19-A 3' BOOKCASE**  
34w x 32h x 12d  
Left shown in Sage Distressed  
Right shown in Black/Heritage Antique



**#23-F CATCH ALL CUPBOARD**  
34w x 32h x 12d  
Left shown in Barn Red/Honey Pine Distressed  
Right shown in Barn Red/Heritage Antique



**#19-A-1 3' BOOKCASE W/1 DRAWER**  
34w x 32h x 12d  
Shown in Cream White/Honey Pine Distressed





**#17-A MEDIUM DELUXE BOOKCASE  
W/ADJUSTABLE SHELVES**

Also available in a large size  
30w x 72h x 17d  
Shown in Antiqued Sky/Heritage Antique



**#22 4' BOOKCASE**

34w x 48h x 12d  
Left shown in Buttercream/Honey Pine Antique  
Right shown in Sage/Michaels Cherry Antique



**23-1-G 4' BOOKCASE  
W/BOTTOM GLASS DOORS**

34w x 48h x 12d  
Shown in Black/Heritage Antique



**#97-G LARGE ENTERTAINMENT SIDE PIECE**

Also used as stereo cabinet or bookcase  
26w x 72h x 17d  
Shown in Black/Heritage Antique



**# #22-1 4' BOOKCASE W/ 1 DRAWER**

34w x 48h x 12d  
Shown in Buttercream Antique  
Shown in Black/Heritage Antique





Gun cabinets available with lights, LED or bulb



**#111 SIDE BY SIDE W/  
GUN RACK  
(HOLDS 4 GUNS)**  
42w x 65h x 13d  
Shown in Black/Heritage  
Antique

**#109 GUN CABINET  
(HOLDS 8 GUNS)**  
38w x 73h x 13d  
Shown in Black/Honey  
Pine Antique



**#117 FILE CABINET**  
17w x 30h x 22d  
Also available w/two drawers in top section  
Shown in Black/Heritage Antique

**#116 3' SMALL DESK**  
36w x 76h x 36d  
Shown in Black/Heritage Antique



For the work space in your home we have a wide selection of pieces that focus on meeting several needs—making your den or office a productive place to be, fitting a smaller space, and looking gorgeous.

## OFFICE & DEN



Available with lights, LED or bulb

OFFICE & DEN



**#116 3' WRITING DESK**  
36w x 76h x 36d  
Shown in Black/Heritage Antique



**#110 SIDE BY SIDE**  
38w x 65h x 13d  
Available W/light  
Shown in Black/Heritage Antique



**#22-A-2 4' NARROW BOOKCASE  
W/2 DRAWERS**  
20w x 47h x 12d  
Shown in Black/Heritage Antique



**#112 DESK TABLE  
AND CHAIR**  
Desk 36w x 24h x XXd  
Shown in Black/Heritage Antique



**#118 SMALL DESK**  
21w x 43h x 12d  
Shown in Black/Heritage Antique



**#19-A-1 3' BOOKCASE W/ 1 DRAWER**  
34w x 32h x 12d  
Shown in Black/Heritage Antique



**#23-B SMALL LIBRARY CABINET**  
20w x 47h x 12d  
Shown in Heritage Antique



**#119 TWIN FILE DESK \***  
60w x 30h x 22d  
Also available w/two drawers in top section  
Shown in Black/Heritage Antique  
\*Chair not included





**#115 FIREPLACE**

55w x 48h x 13d

Shown in Black/Heritage Antique

Also available with electric  
fireplace (shown below) #114



**#97A TV/BUFFET COMBO W/FIREPLACE**

72w x 36h x 15d

Shown in Black/Heritage Antique

Chimney cabinets, chimney safes, and grandmother's cabinets all make excellent use of the space flanking your fireplace—adding rustic charm at the same time. Store books or decorative accessories in style.

# FIREPLACE ACCENTS





**#1-E GRANDMOTHER'S CUPBOARD**

20w x 72h x 12d

Shown in Sage/Heritage Antique



**#23-D NEW ENGLAND  
1 DOOR**

20w x 72h x 12d

Shown in Barn Red Distressed



**#23-C NEW ENGLAND  
2 DOOR**

20w x 72h x 12d

Shown in Black/Heritage Antique



**#67 CLOTHES TREE**

66" high

Shown in Black Distressed



**#10 CHIMNEY SAFE**

16w x 51h x 12d

Left shown in Buttercream Antique

Right shown in Black Antique



**#97-H CORNER TV STAND  
W/ELECTRIC FIREPLACE**

39w x 35h x 22d

Takes 29" of wall space, also available w/doors.

Shown in Heritage Antique



# BEDROOM

It all starts with the bed itself. Choose a panel bed, pencil post bed, or sleigh bed, then order w/our fabulous finish. Next, complete the suite with matching chests of drawers, chest-on-chests, armoires, dressers, end tables, and phone stands. Other bedroom pieces for your vintage sleeping area include kettle house shelves, Yankee cupboards, and bookcases.

**#93-A QUEEN PENCIL POST BED**







**#94-A SLEIGH BED (QUEEN)**

Headboard 60" h • Footboard 42" h

Also available: King #94 Full #94-B Twin #94-C

Shown in Black/Heritage Antique





**#88 HERITAGE BED (QUEEN)**  
Headboard 67" h • Footboard 33" h  
Also available: King, Full & Twin  
Shown in Black/Heritage Antique



**#84 RAISED PANEL BED (QUEEN)**  
Headboard 44" h • Footboard 28" h  
Also available: King #83-A Full #85 Twin #86  
Shown in Buttercream/Honey Pine Antique



Pencil Post Bed shown  
with optional Canopy Rails  
& Canopy Slats



**#93-A PENCIL POST BED (QUEEN)**  
without/Canopy rail  
Headboard 46" h • 4 Posts 84" h  
Also available: King #93 Full #93-B Twin #93-C  
Shown in Black/Heritage Antique





**#69 SMALL ARMOIRE**

36w x 70h x 20d

Shown in Black/Heritage Antique



**#78 CHEST ON CHEST**

36w x 58h x 20d

Shown in Black/Heritage Antique



**#79 9-DRAWER DRESSER**

52w x 40h x 20d

Mirror 40 x 34 (sold separately) #79

Shown in Black/Heritage Antique



**#81 CHEST OF DRAWERS**

32w x 52h x 21d

Shown in Black/Heritage Antique

Shown in Buttercream/Heritage Antique

Also available in 4 drawer chest #82

and a 3 drawer chest #83 - not shown







**#1-F COLONIAL PHONE STAND**

25w x 36h x 13d

Shown in Black/Heritage Antique



**#80 6 DRAWER DRESSER**

53w x 34h x 21d

Mirror 40 x 32 (sold separately) #80-A

Shown in Buttercream/Heritage Antique



**#23-H PHONE STAND  
(ALSO USE AS NIGHT STAND)**

22w x 32h x 12d

Left shown in Buttercream/Heritage Antique

Right shown in Black/Heritage Antique



**#9 SMALL CHIMNEY CABINET**

16w x 30h x 12d

Shown in Taupe/Heritage Antique



**#9-A OPEN CHIMNEY CABINET**

16w x 30h x 12d

Also used as a night stand  
Shown Unfinished





**#77 BLANKET CHEST**  
38w x 36h x 19d  
Shown in Black/Heritage Antique



**#83-2 1-DRAWER NIGHTSTAND**  
23w x 30h x 14d  
Shown in Black/Heritage Antique



**#22-2 4' BOOKCASE W/2 DRAWERS**  
34w x 48h x 12d  
Shown in Black Distressed



**#83 CHEST OF DRAWERS W/3 DRAWERS**  
32w x 33h x 21d  
Also can be used as a large night stand  
Shown in Black/Heritage Antique



**#83-1 3-DRAWER NIGHTSTAND**  
23w x 30h x 14d  
Shown in Black/Heritage Antique





**#98-B BARNDOOR PANTRY/WARDROBE**

43w x 71h x 22d

Shown in Black/Heritage Antique



**#19-A-2 3' BOOKCASE W/2 DRAWERS**

34w x 32h x 12d

Shown in Black/Heritage Antique



**#23-G YANKEE CUPBOARD**

20w x 32h x 12d

Shown in Blue Distressed



# WALL ACCESSORIES

There's always wall space somewhere that cries out for an accessory. Choose from shelves and mirrors, or for a whimsical touch, how about a bird house?





# WALL ACCESSORIES



**#60 3' GETTYSBURG CUBBIE SHELF**

30w x 20h x 6d  
Available w/Quilt Bar  
Shown in Black/Heritage Antique



**#63 2' CUBBIE SHELF W/TOWEL BAR**

24w x 20h x 6d  
Available with pegs  
Shown in Barn Red/Heritage Distressed



**#66 KETTLE HOUSE SHELF**

30w x 34h x 10d  
Shown in Black/Heritage Antique



**#62 3' GETTYSBURG QUILT SHELF**

36w x 20h x 6d  
Available with pegs  
Shown in Cream White/Heritage Distressed



Shown in Black/Heritage Antique



Shown in Bright White Distressed



Shown in Black/Heritage Antique



Shown in Special Cherry Distressed

**#57 SINGLE WALL CABINET**

17w x 32h x 6d  
Available with pegs or towel bar  
Door options: wood, glass or mirror





## #58 DOUBLE WALL CABINET

32w x 32h x 6d

Available W/pegs or towel bar

3 door options: wood, glass or mirror

Shown in Black/Heritage Antique



## #55 TAVERN MIRROR

30 w x 23h x 4d

Shown in Black Antique



## #56 HALL MIRROR

16w x 34h x 4d

Shown in Heritage Antique



**NEW**

# *We Do* KITCHEN CABINETS!

Looks great in kitchens, offices,  
dens, recrooms, libraries, wine  
bars, man caves, etc.

## **Transform Your Kitchen into a Culinary Masterpiece!**

Dreaming of a kitchen that's both beautiful  
and functional? We can turn your kitchen  
visions into reality with our exquisite  
range of custom wood cabinets.

Why Choose Us?

**Custom Design:** Tailored to your style  
and space, our cabinets are crafted to  
meet your unique needs.

**High-Quality Materials:** Our cabinets  
are built to last, using only the finest materials  
to ensure durability and timeless appeal.

**Expert Craftsmanship:** Our skilled  
craftsmen bring precision and artistry to  
every piece, ensuring your cabinets are  
both functional and stunning.

## **Ready to Elevate Your Kitchen?**

Contact us today for a free consultation  
and discover how we can bring your dream  
kitchen to life.



**Rustic Hickory Finish**



Available in Pine, Rustic Hickory, Wormy Maple, Oak, Cherry, Brown Maple & more.







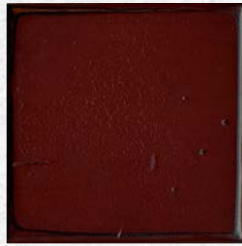
# ANTIQUE PAINT COLORS



**ANTIQUED  
ASH**



**ANTIQUED  
AVACADO**



**ANTIQUED  
BARN RED**



**ANTIQUED  
BLACK**



**ANTIQUED  
BLUE**



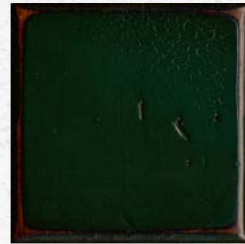
**ANTIQUED  
BRIGHT WHITE**



**ANTIQUED  
BUTTER CREAM**



**ANTIQUED  
DENIM**



**ANTIQUED  
GREEN**



**ANTIQUED  
PAPRIKA**



**ANTIQUED  
POOLSIDE**



**ANTIQUED  
SAGE**



**ANTIQUED  
SKY**



**ANTIQUED  
TAUPE**

# ANTIQUE STAIN COLORS



**ANTIQUED  
DRIFTWOOD**



**ANTIQUED  
HERITAGE**



**ANTIQUED  
HONEY PINE**



**ANTIQUED  
MICHAEL'S CHERRY**



**ANTIQUED  
MOCHA**



**ANTIQUED  
SPECIAL CHERRY**



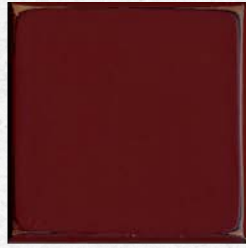
# DISTRESSED PAINT COLORS



**DISTRESSED  
ASH**



**DISTRESSED  
AVOCADO**



**DISTRESSED  
BARN RED**



**DISTRESSED  
BLACK**



**DISTRESSED  
BLUE**



**DISTRESSED  
BRIGHT WHITE**



**DISTRESSED  
BUTTER CREAM**



**DISTRESSED  
CREAM WHITE**



**DISTRESSED  
DENIM**



**DISTRESSED  
GREEN**



**DISTRESSED  
PAPRIKA**



**DISTRESSED  
POOLSIDE**



**DISTRESSED  
SAGE**



**DISTRESSED  
SKY**



**DISTRESSED  
TAUPE**

# DISTRESSED STAIN COLORS



**DISTRESSED  
DRIFTWOOD**



**DISTRESSED  
HERITAGE**



**DISTRESSED  
HONEY PINE**



**DISTRESSED  
MICHAEL'S CHERRY**



**DISTRESSED  
MOCHA**



**DISTRESSED  
SPECIAL CHERRY**



