

2025





*We provide an amazing variety of chimes that will fit any setting and are sure you will find the perfect one for your home or porch.*

|                                    |       |
|------------------------------------|-------|
| Powder Coated Aluminum Tubes ..... | 3     |
| O-Rings.....                       | 3     |
| Wind Chime Tops & Strikers .....   | 3     |
| Wind Harp .....                    | 4     |
| The Bell Collection.....           | 4     |
| Mountain Reflections .....         | 5     |
| Garden Gate Chorus .....           | 5     |
| Enchanting Flower Series.....      | 6     |
| Biblical Bells.....                | 6     |
| Rustic Rhythms .....               | 7     |
| Pacific Winds .....                | 7     |
| Twilight Series .....              | 8     |
| Ozark Echoes .....                 | 8     |
| Ultimate Series .....              | 9     |
| Musical Zenith .....               | 9     |
| Whispers in the Wind .....         | 10    |
| Chuck Wagon Dinner Bells.....      | 10    |
| Chime Engravings .....             | 10    |
| Surprise Boxes.....                | 10    |
| Hooks .....                        | 11    |
| Display Stands .....               | 11    |
| Size Comparision Index .....       | 12-15 |

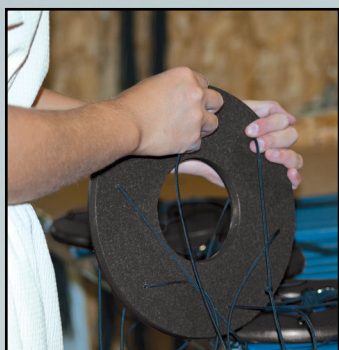
### ***Lifetime Warranty***

This Lifetime Warranty ensures that if the chime or parts of it are found to be dysfunctional, or become dysfunctional, Lambright Country Chimes will repair or replace the flawed parts free of charge for as long as you own your chime. This even includes the string, but it does not include normal wear and tear of the paint on the chime.

*\*Chimes must be returned to store in order to receive free repairs.*

***For nearly 20 years, we have has provided individually handcrafted wind chimes that are meant to be enjoyed year-round. We have expanded to almost 40 unique sounds in a variety of beautiful finish colors for the ultimate addition to any home or garden. Our goal is to provide wind chimes of superior quality at a reasonable price, and as a small family-owned and operated shop, we hope to establish a personalized relationship with each of our customers for a satisfactory and memorable experience.***

All of our windchimes have a Lifetime Warranty. They are handcrafted in Shipshewana, Indiana. Aluminum tubes are powder-coated, and string is polyester UV-treated. As an alternative to wood, recycled plastic milk jugs are used to make chime tops and strikers. Some factors that determine each individual tone include the diameter of the tubes as well as the length and wall thickness. Each windchime has a unique tone and is available ONLY in color shown.



### ***Powder Coated Aluminum Tubes***

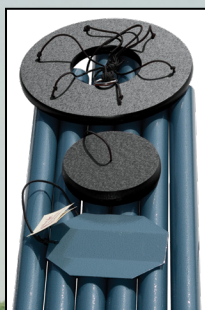
Powder coating bakes the color onto the aluminum, making it durable and more resistant to weather. It is also UV-resistant to minimize fading in sunlight. Each series of wind chimes is unique in color.

Chime tones are created by different wall thicknesses of the tubes as well as the length and diameter. Square tube chimes are meant to provide the option of a more unique, contemporary version of the common round tube chimes.



### ***O-Rings***

UV-treated rubber o-rings are provided for all wind chimes with round tubes. If placed at the very bottom of each tube these act as "bumpers" and will reduce clanging of the tubes.



### ***Wind Chime Tops & Strikers***

Poly lumber is used for wind chime tops and strikers. This is an unbreakable environmentally friendly material made from recycled milk jugs. Poly lumber will not rot, crack, or chip, and is very weather-resistant. The string used is polyester UV-treated, and our one-of-a-kind suspension system further prolongs the life of the string.



## Wind Harp

Sit back, relax, and let the wind sing you a song. A unique addition that will enhance your backyard.

**#WH111 Wind Harp, 24" x 50"**

**#WH112 Wind Harp, 20" x 44"**  
(not shown)



#DB031 | Sarasota Sun | 44"

## The Bell Collection

**#DB033 Prescott Ballad, 37"**

**#DB032 Southern Belle, 41"**

**#DB031 Sarasota Sun, 44"**

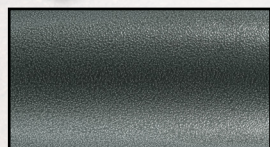


#301 | Spirit of Maroon Bells | 75"

## Mountain Reflections

Named for the vast assortment of uninterrupted nature found amongst the stunning *Maroon Bells* mountains of Colorado. 3" round.

**#301 Spirit of Maroon Bells, 75"**



hammertone slate detail



#200 | Morning Song | 25"

## Garden Gate Chorus

A cheery greeting of an unblemished new day!  
1/2" square.

**#200 Morning Song, 25"**



coppertop detail

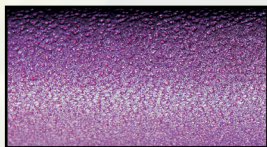


#704 | Canterbury Bells | 49"

### Enchanting Flowers Series

The names and captivating tones of these wind chimes will take you on a peaceful walk through a garden of flowers. Beautiful "mayo purple" color (lavender/purple). 1 1/8" round.

- #701 *Morning Glory*, 36"
- #702 *Bleeding Heart*, 41"
- #703 *Evening Primrose*, 43"
- #704 *Canterbury Bells*, 49"



mayo purple detail



#855 | Harmonica | 53"

### Biblical Bells

The resounding tones of these bells encourage meditation and reflections on the instruments of the Bible. 1 1/4" round.

- #851 *Melody of the Heart*, 37"
- #852 *Song of Solomon*, 39"
- #853 *King David's Harp*, 41"
- #854 *Victory Bells of Jericho*, 44"
- #855 *Harmonica*, 53"



textured copper detail



## Rustic Rhythms

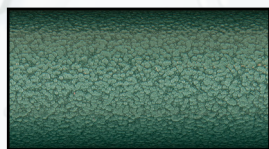
A series reminiscent of summer rain and camping, these are meant for those with a love of the great outdoors. 1" round.

#511 *Tinker Belle*, 32"

#512 *Songbird*, 36"

#513 *Tranquil Rain*, 41"

#514 *Forest Edge*, 44"



malachite detail



## Pacific Winds

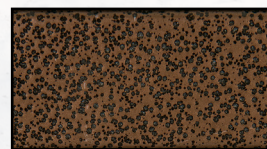
From the soothing sounds of an ocean breeze and a mountain serenade to the rich tones of a grandfather clock, you will love these chimes. 1" square.

#433 *Grandfather Clock*, 80"

#434 *Church Bell*, 65"

#436 *Mountain Serenade*, 48"

#437 *Ocean Breeze*, 36"



bronze detail



#002 | Dream Maker | 64"

### ***Twilight Series***

The largest series of wind chimes available, these lulling tones will ensure tranquility. 2" round.

- #001 *Aqua Tune*, 51"
- #002 *Dream Maker*, 64"
- #003 *Music of the Universe*, 84"



*truillusion black detail*

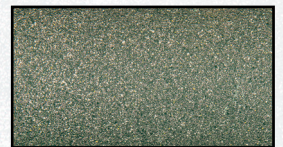


#904 | Sonic Soundwaves | 56"

### ***Ozark Echoes***

In a new neutral green color, this popular series will inspire your personal "Serenity". 1½" round.

- #901 *Solar Singer*, 38"
- #902 *Serenity*, 48"
- #903 *Summer Songfest*, 52"
- #904 *Sonic Soundwaves*, 56"



*jade detail*



#842 | Court Haus | 62"

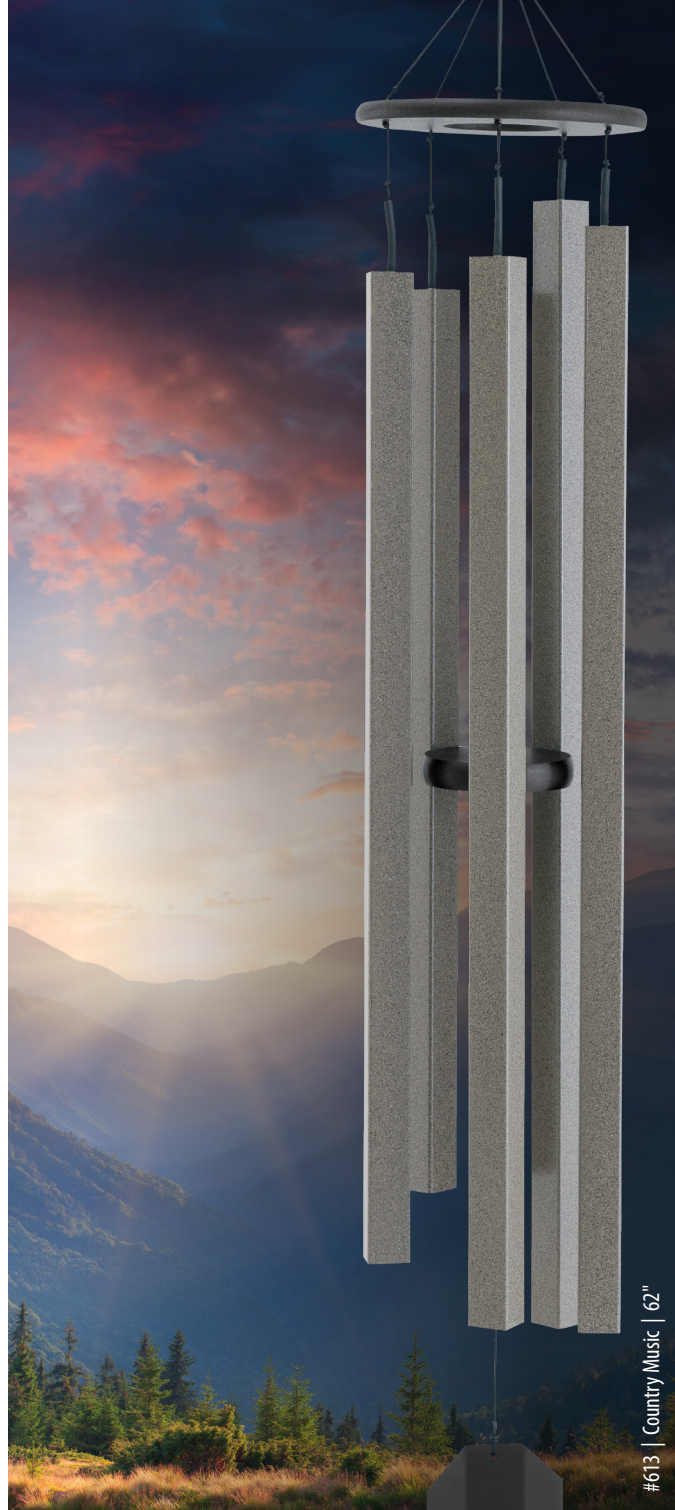
### **Ultimate Series**

The Big Ben creates a deep resonating tone, while the Hummer chime is a favorite for many. 1½" round.

- #841 *Big Ben*, 82"
- #842 *Court Haus*, 62"
- #843 *Hummer*, 50"
- #844 *Baby Ben*, 42"



terra detail



#613 | Country Music | 62"

### **Musical Zenith**

Featuring unique square tubes, these contemporary style chimes create soft melodious tunes. Now with black poly tops and strikers. 1½" square.

- #610 *Alpine Whisper*, 43"
- #611 *Dutch Bell*, 46"
- #613 *Country Music*, 62"
- #614 *Sunsetter*, 73"



mocha detail



#818 | Zephyr Valley | 37"

## Whispers in the Wind

These smaller wind chimes were inspired by nature's own cheerful calls, gently lifting the spirits. 1" round.

#817 *Sierra Springs*, 66"

#818 *Zephyr Valley*, 37"

#819 *Spring Meadow Song*, 35"

#820 *Sparkling Brook*, 30"



tex black detail

## Chuck Wagon Dinner Bells

Available in Steel or Aluminum, and in 3 sizes (Small 8", Medium 12", Large 16").



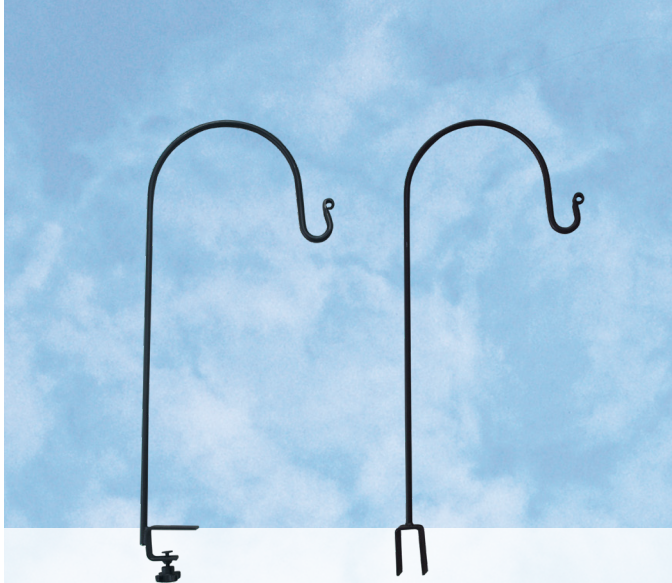
## Chime Engravings

Engravings are available on all chimes and make great gifts. We can engrave names, dates, clip-art of your choosing as well as many other items. Allow 1-2 weeks.



## Surprise Box

Made of high-quality, 9-ply Birch plywood, these surprise boxes are made to last and are a great way to entertain your friends. Specify Mouse or Spider. 3.5" x 5" x 5"



## ***Hooks***

Horizontal Deck Rail Hook w/Knob, 29"

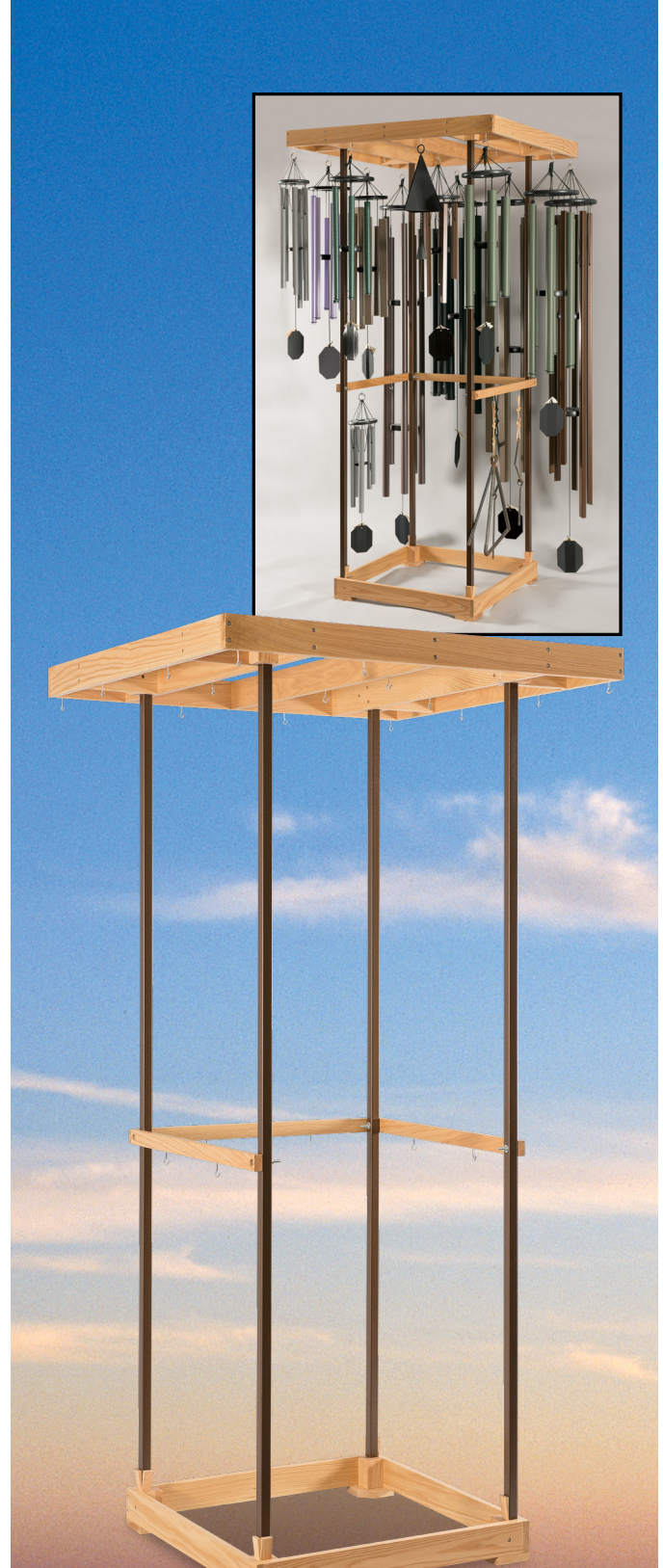
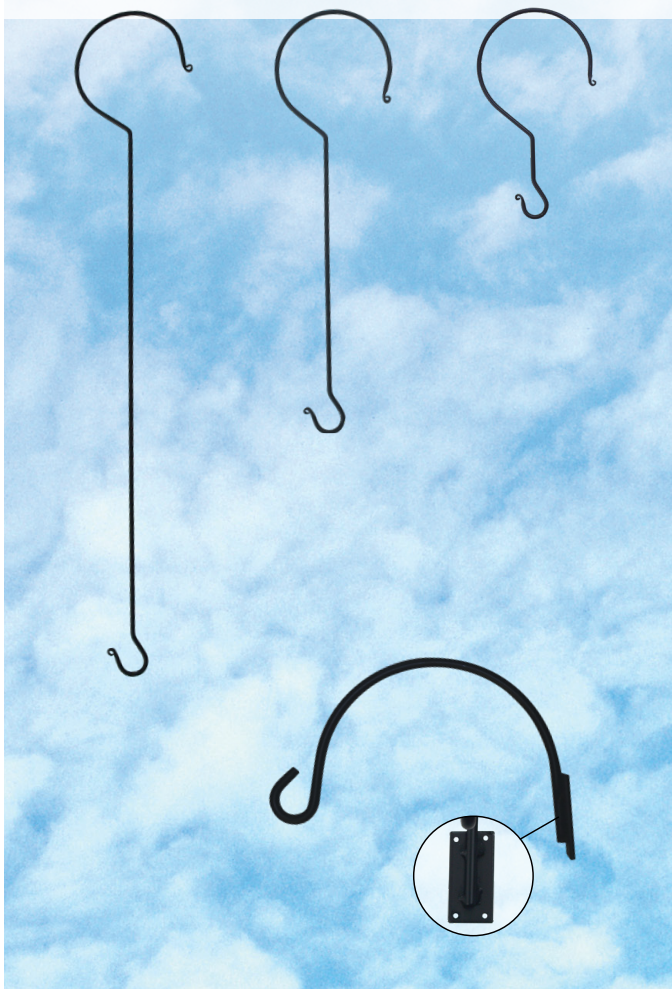
Vertical Deck Rail Hook, 29"

Large Tree Limb Hook, 36"

Medium Tree Limb Hook, 24"

Small Tree Limb Hook, 12"

Wall Hook w/Back Plate, 13" from wall

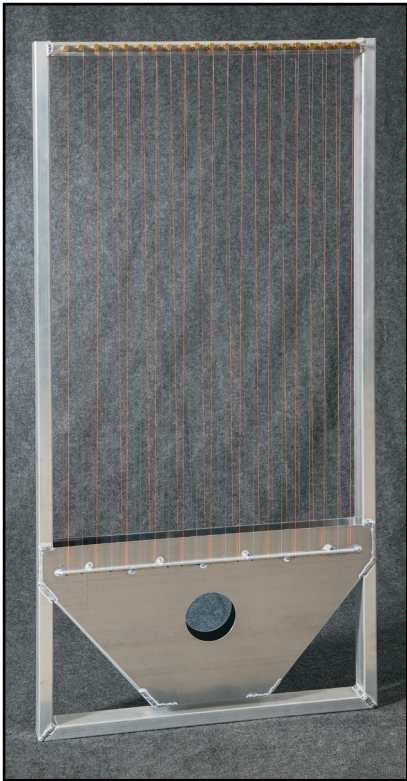


## ***Display Stand***

This attractive display stand is constructed of solid oak with aluminum posts. Two levels to display varied sizes of chimes. Stand displays 20-30 chimes, depending on their size.

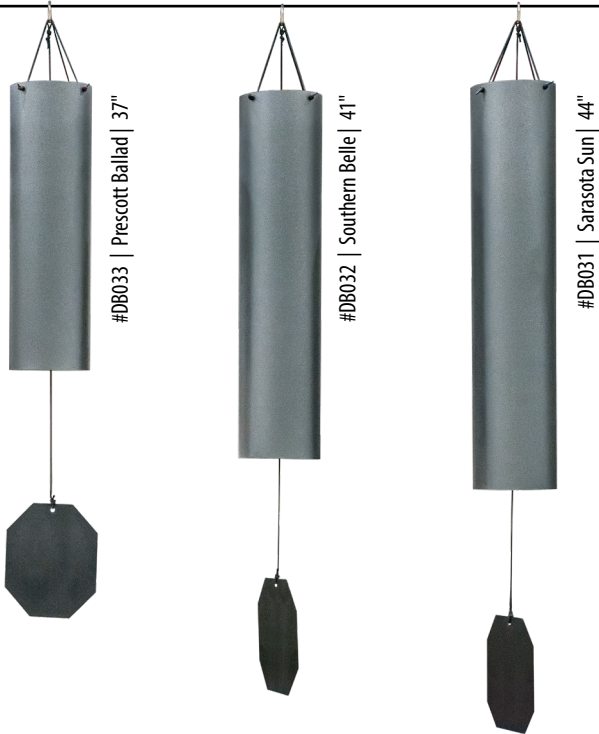
**#111** *Display Stand*, 39" x 39" x 82"

Wind Harp



#WH111 | Wind Harp | 24" x 50"  
#WH112 | Wind Harp | 20" x 44"  
(not shown)

The Bell Collection



Mountain Reflections



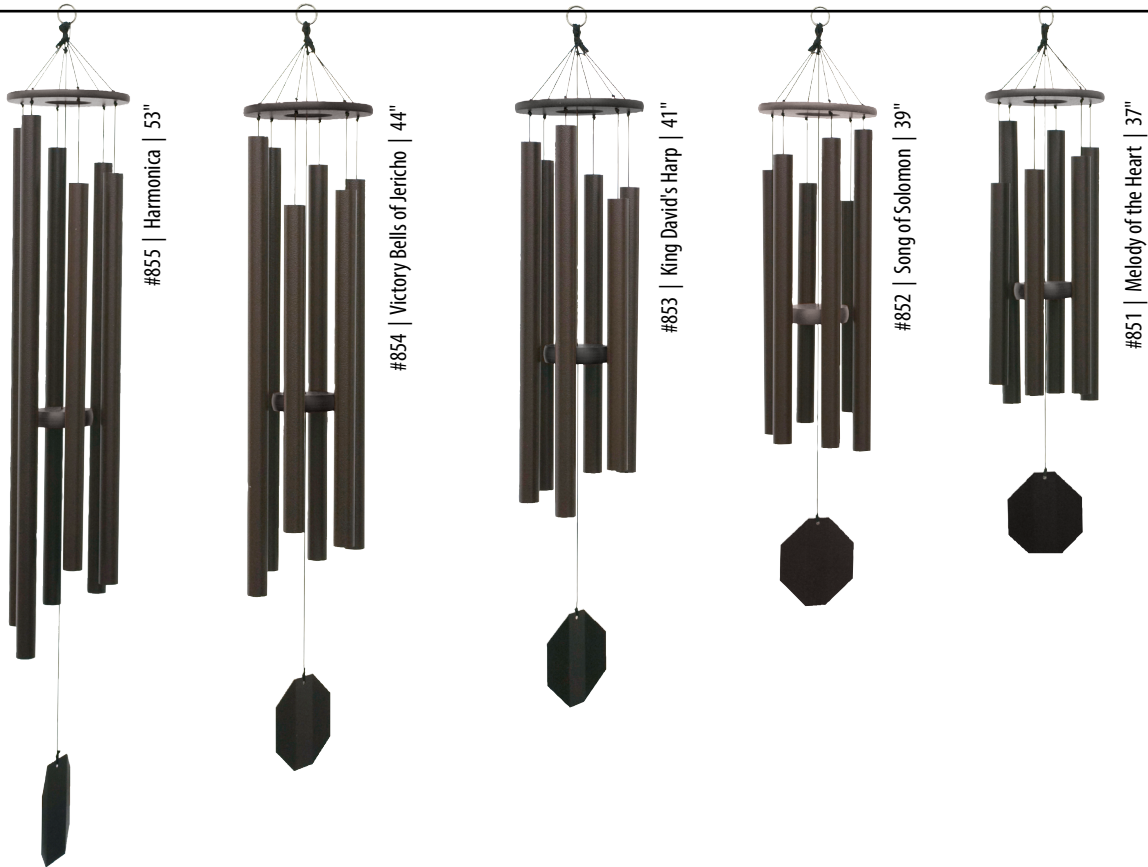
Garden Gate Chorus



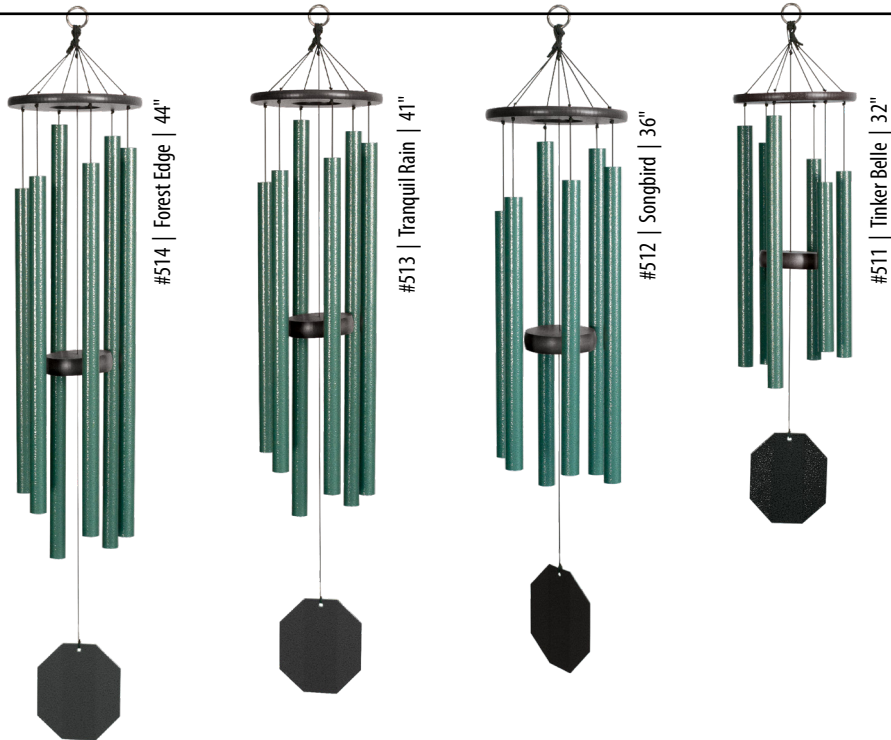
Enchanting Flower Series



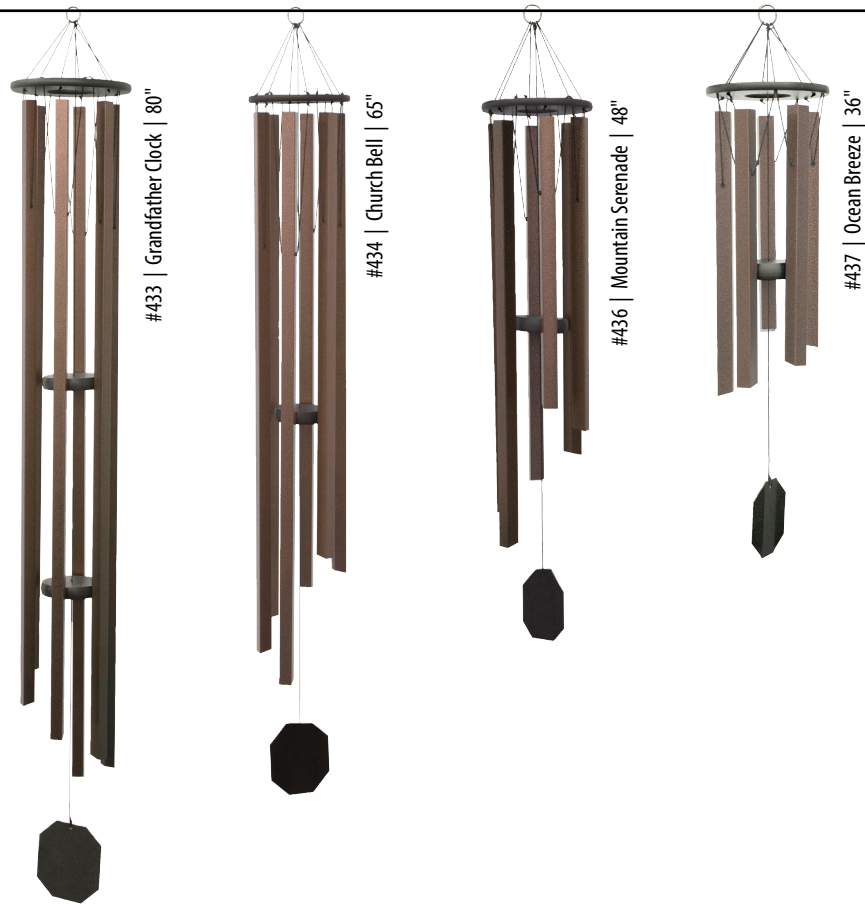
***Biblical Bells***



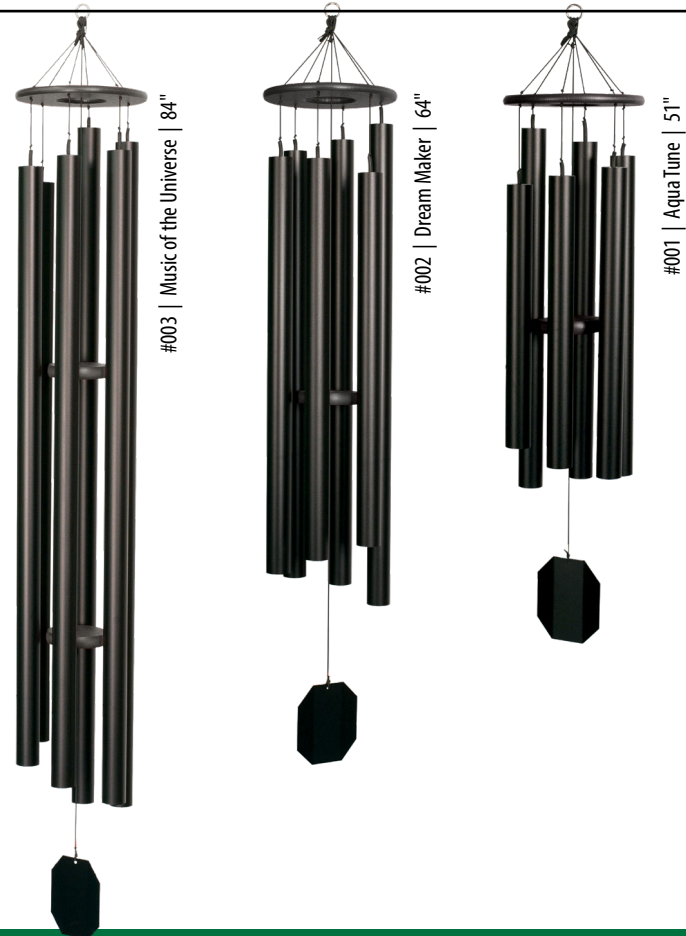
***Rustic Rhythms***



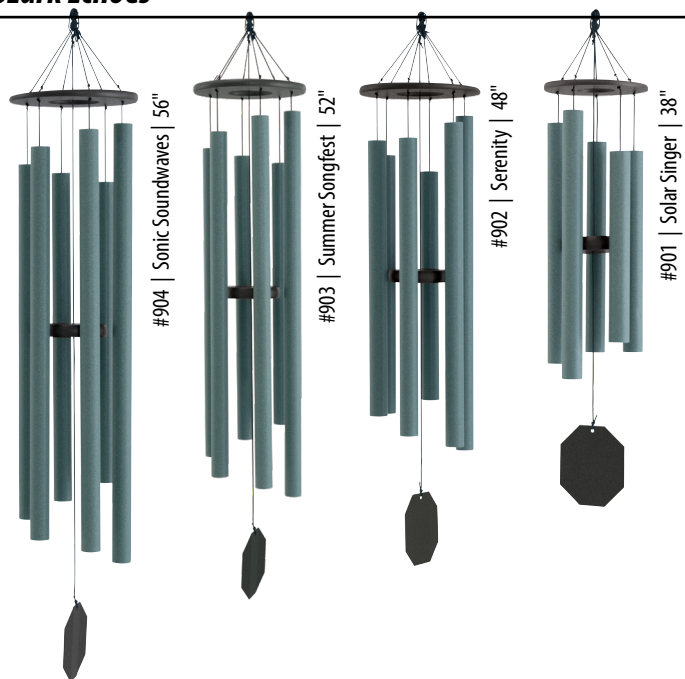
Pacific Winds



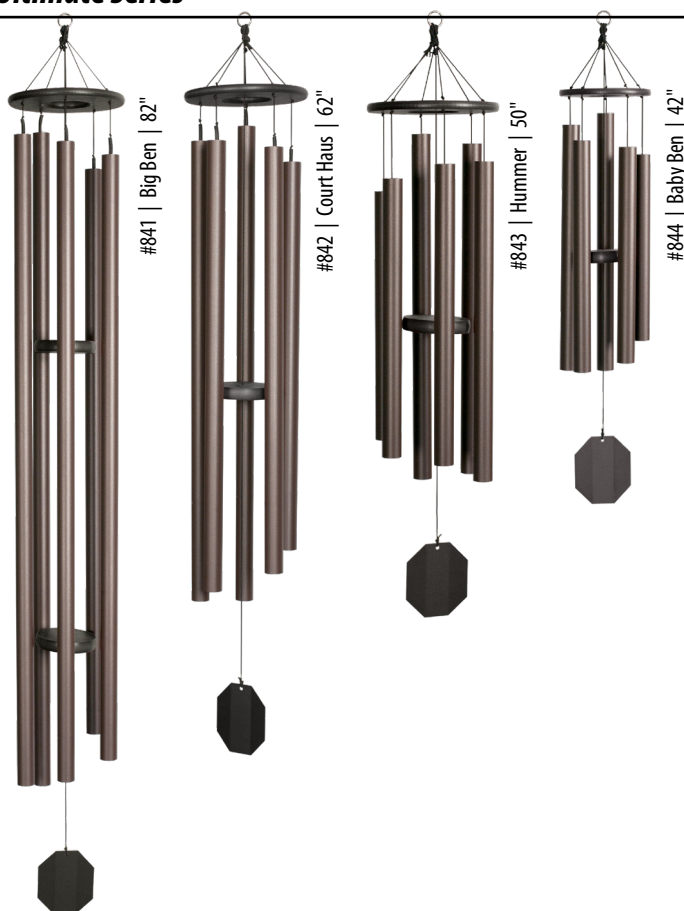
Twilight Series



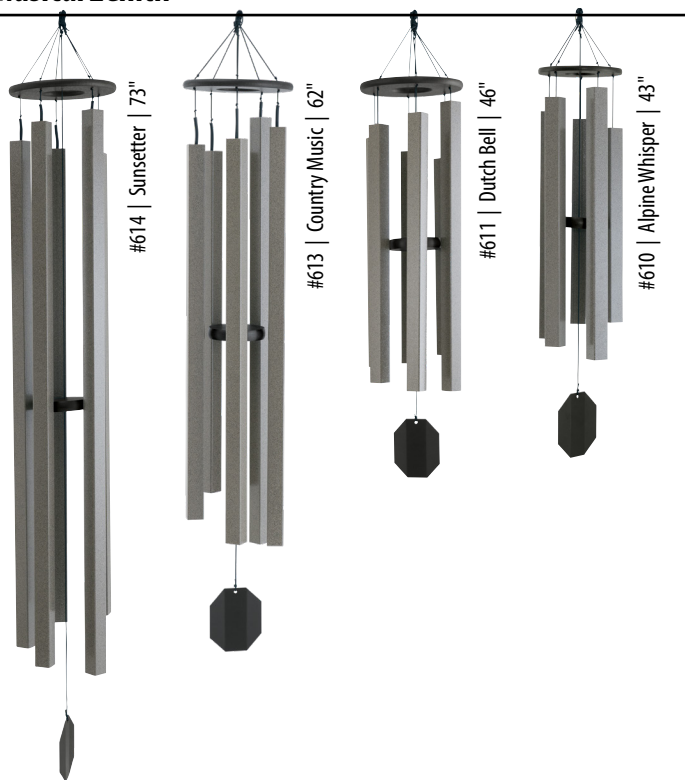
## Ozark Echoes



## Ultimate Series



## Musical Zenith



## Whispers in the Wind

